



# PRODUCT CATALOGUE

YOUR HOME IS OUR MISSION YOUR TASKS ARE OUR SOLUTIONS

*Візьмемо Україну разом!*



# CONTENT

<b>COMPANY PATH</b>	3
<b>ADHESIVES</b>	4
Acrylic assembly	5
adhesives Rubber assembly	14
adhesives MS-polymer-based assembly adhesives	16
Acrylic adhesive sealants	18
PVA adhesives	19
<b>SEALANTS</b>	21
Acrylic sealants Silicone sealants	22
Silicate sealants Acrylic sealants	25
for installation joints	27
	28
<b>MOUNTING POWDER</b>	30
Household mounting foams Professional	31
mounting foams Fire-resistant mounting	32
foams Household adhesive foams	33
Professional adhesive foams	34
Mounting foam cleaner	35
	37
<b>PAINTS AND COATINGS</b>	38
Interior paints	39
Facade paints	46
Universal paints Acrylic	49
primers Primers Universal	51
pigment	53
pastes	54
<b>SPECIAL-PURPOSE MATERIALS</b>	55
Acrylic waterproofing Acrylic primer	56
concentrate	58
	58
<b>VIDEO STORIES</b>	59

# COMPANY PATH



**2022**

A full-scale invasion and a completely destroyed enterprise



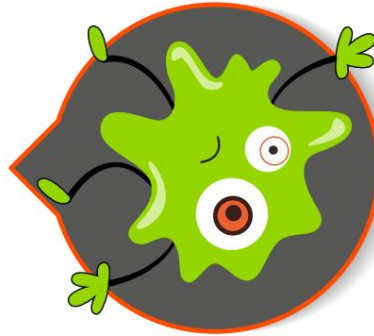
**2017**

Purchase of a foam production plant



**2024**

PHOENIX VELCRO market leader again sale!



**2021**

Sales leader in Ukraine



**1993**

Company formation





**ADHESIVES**

---

# ACRYLIC MOUNTING ADHESIVES

## ACRYLIC MOUNTING GLUE "MAD VELCRO"



### CRAZY VELCRO GLUE is a waterproof construction adhesive for installing wall and floor covering systems

The glue is characterized by excellent adhesion to the surfaces of the vast majority of building materials and the effect "zero" slip.

After drying, it forms a strong, waterproof adhesive joint that can withstand significant loads, compensate for deformation effects and provides a long service life. The product is environmentally friendly, does not contain organic solvents and biologically hazardous compounds.

**APPLICATION:** working surfaces must be dry, strong and even, free from dust, dirt, grease, old paint or other substances, loose particles. At least one of the contact surfaces must be porous. Surfaces of porous materials must be thoroughly treated in advance with the working solution of Primer Concentrate 1:10 TM Lacrysil and dried. Before using the product from the bucket, mix until homogeneous.

Apply glue in dots or stripes to one of the contact surfaces and press firmly and evenly. Do not allow the glue stripes to merge when pressing the surfaces together.

### TECHNICAL SPECIFICATIONS

Base	acrylate copolymer
Application temperature	+5°C ... +35°C
Drying time	24 - 48 hours
Color	white
Temperature operation	-40°C ... +80°C
Cost	0.25 - 1 kg/m <sup>2</sup>
Packaging	0.2kg; 0.4kg; 1.2kg; 3kg; 6kg; 12kg
Shelf life	18 months

BASIS MATERIAL	Basis							Polyfoam
	Concrete	Drywall	Stone	Marble	Ceramics	Porcelain	Painted	
Concrete, Brick, Gypsum Drywall	✓	✓	✓	✓	✓	✓	✓	✓
Stone, Granite, Marble	✓	✓	✓	✓	✓	✓	✓	✓
Mirror, Glass	✓	✓	✓	✓	✓	✓	✓	✓
Wood, chipboard, MDF, fiberboard, plywood	✓	✓	✓	✓	✓	✓	✓	✓
Tile, Ceramics, Porcelain	✓	✓	✓	✓	✓	✓	✓	✓
Primed metal	✓	✓	✓	✓	✓	✓	✓	✓
Plastic, PVC	✓	✓	✓	✓	✓	✓	✓	✓
Polystyrene foam	✓	✓	✓	✓	✓	✓	✓	✓

# ACRYLIC MOUNTING ADHESIVES

## ACRYLIC MOUNTING GLUE "LIQUID NAILS"



### LIQUID NAILS GLUE is a convenient means of reliable fixation of various building structures

Highly elastic universal adhesive based on copolymer acrylate for external and internal repair and installation work, strong bonding of structures made of wood and its products, cork, ceramics, etc. to traditional building surfaces. Ideal for bonding products and decorative elements based on expanded polystyrene. Attention! At least one of the contact surfaces must be water-permeable to ensure the rapid formation of an adhesive joint from a strong mineral-polymer composite.

**APPLICATION:** working surfaces must be strong, dry and even, thoroughly cleaned of dust, dirt, old paint, other contaminants and layers. Porous bases (gypsum, ceramic, natural stone) must be thoroughly treated in advance with the working solution of Primer Concentrate 1:10 TM Lacrysil and dried.

Apply the glue in dots (mandatory for non-absorbent materials) or stripes to one of the contact surfaces and press firmly and evenly. Do not allow continuous application of glue between surfaces that do not absorb moisture. Avoid merging of the applied glue stripes when pressing the surfaces.

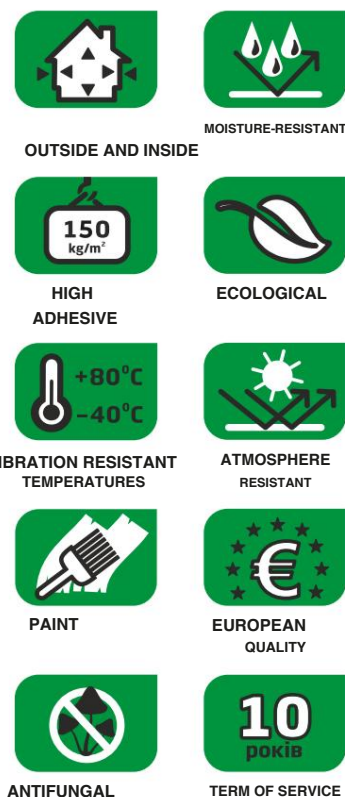
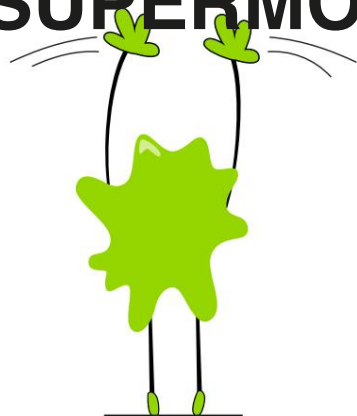
### TECHNICAL SPECIFICATIONS

<b>Base</b>	acrylate copolymer
<b>Application temperature</b>	+5°C ... +35°C
<b>Drying time</b>	24 - 48 hours
<b>Color</b>	white
<b>Temperature operation</b>	-40°C ... +80°C
<b>Cost</b>	0.25 - 1 kg/m <sup>2</sup>
<b>Packaging</b>	white - 0.2kg; 0.4kg transparent - 0.15kg; 0.28kg
<b>Shelf life</b>	18 months

BASIS MATERIAL	Concrete, Drywall, Marble, Mirror, ...								
	Concrete	Drywall	Marble	Mirror	...	...	...	Plastic, PVC	Polystyrene
Concrete, Brick, Gypsum Drywall	✓	✓	✓	✓	✓	✓	✓	✓	✓
Stone, Granite, Marble	✓	✓	✓	✓	✓	✓	✓	✓	✓
Mirror, Glass	✓	✓	✓	✓	✓	✓	✓	✓	✓
Wood, chipboard, MDF, fiberboard, plywood	✓	✓	✓	✓	✓	✓	✓	✓	✓
Tile, Ceramics, Porcelain	✓	✓	✓	✓	✓	✓	✓	✓	✓
Primed metal	✓	✓	✓	✓	✓	✓	✓	✓	✓
Plastic, PVC	✓	✓	✓	✓	✓	✓	✓	✓	✓
Polystyrene foam	✓	✓	✓	✓	✓	✓	✓	✓	✓

# ACRYLIC MOUNTING ADHESIVES

## ACRYLIC MOUNTING GLUE "SUPERMONTAGE"



### SUPERMONTAGE GLUE is a high-quality one-component construction adhesive

High-quality adhesive for repair and installation work inside and outside the premises, designed for reliable bonding of structures made of wood and its processing products, laminate, parquet, linoleum, carpet, polystyrene foam and polyurethane, glass, facing tiles, ceramics, gypsum and drywall, cork, etc. in all variations and their fixation on traditional building surfaces.

**APPLICATION:** working surfaces must be dry, strong and even, free from dust, dirt, grease, old paint or other substances, loose particles. At least one of the contact surfaces must be porous. Surfaces of porous materials must be thoroughly treated in advance with the working solution of Primer Concentrate 1:10 TM Lacrysil and dried. Before using the product from the bucket, mix until homogeneous.

Apply glue in dots or stripes to one of the contact surfaces and press firmly and evenly. Do not allow the glue stripes to merge when pressing the surfaces together.

#### TECHNICAL SPECIFICATIONS

<b>Base</b>	acrylate copolymer
<b>Application temperature</b>	+5ÿÿ ... +35ÿÿ
<b>Drying time</b>	24 - 48 hours
<b>Color</b>	white
<b>Operating temperature</b>	-40ÿÿ ... +80ÿÿ
<b>Cost</b>	0.25 - 0.5 kg/m2
<b>Packaging</b>	0.4kg
<b>Shelf life</b>	18 months

#### BASIS

#### MATERIAL

	Concrete	Drywall	Stone	Marble	Porcelain	Painted	Polystyrene
Concrete, Brick, Gypsum Drywall	✓	✓	✓	✓	✓	✓	✓
Stone, Granite, Marble	✓	✓	✓	✓	✓	✓	✓
Mirror, Glass	✓	✓	✓	✓	✓	✓	✓
Wood, chipboard, MDF, fiberboard, plywood	✓	✓	✓	✓	✓	✓	✓
Tile, Ceramics, Porcelain	✓	✓	✓	✓	✓	✓	✓
Primed metal	✓	✓	✓	✓	✓	✓	✓
Plastic, PVC	✓	✓	✓	✓	✓	✓	✓
Polystyrene foam	✓	✓	✓	✓	✓	✓	✓

# ACRYLIC MOUNTING ADHESIVES

## ACRYLIC MOUNTING GLUE DECOR



### DECOR GLUE is a professional glue for fixing decorative elements.

Balanced adhesive composition based on modern acrylic copolymers, fillers and multifunctional modifiers; characterized by excellent fixing properties, adhesion to the surfaces of porous materials, moisture resistance and vapor permeability.

Designed for interior decorative and finishing works, fixing products made of polystyrene foam and polyurethane foam (plates, sockets, panels, baguettes, skirting boards, moldings, etc.) on traditional construction bases.

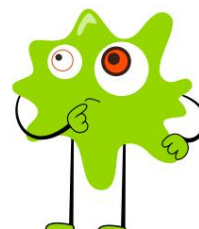
**APPLICATION:** before starting work, the working surface should be thoroughly cleaned of dust, oil, grease, old paint and other substances. The base should be dry, strong and even. Porous bases should be thoroughly treated in advance with the working solution of Primer-concentrate 1:10 TM Lacrysil and dried. Apply the glue in dots or stripes on one of the contact surfaces and press firmly and evenly.

Do not allow continuous application of glue between surfaces that do not absorb moisture. Avoid merging of glue strips when pressing the surfaces.

### TECHNICAL SPECIFICATIONS

Base	acrylate copolymer
Application temperature	+5°C ... +35°C
Drying time	24 - 48 hours
Color	white
Operating temperature	-40°C ... +80°C
Cost	0.25 - 0.5 kg/m <sup>2</sup>
Packaging	0.4kg
Shelf life	18 months

BASIS MATERIAL	Concrete, Drywall, Marble, Mirror, Glass, Ceramic, Porcelain, Brick, Plastic, PVC, Polystyrene							
	Polystyrene foam	✓	✓	✓	✓	✓	✓	✓
Polyurethane foam	✓	✓	✓	✓	✓	✓	✓	✓



# ACRYLIC MOUNTING ADHESIVES

## ACRYLIC MOUNTING GLUE "UNIVERSAL LA CRYSTAL»



### LA CRYSTAL GLUE – construction adhesive for reliable, strong fixation of coatings based on natural materials

High-quality, ready-to-use one-component adhesive based on acrylic copolymer dispersions and multifunctional modifiers. The complex of properties and the implemented system of enhanced fungicidal protection make the adhesive ideal for working with natural materials. The adhesive is intended for interior work on fixing tiled and rolled cork coverings, bamboo and jute materials, all types of heavy wallpaper to the vast majority of traditional building surfaces.

**APPLICATION:** working surfaces must be dry, strong and even, free from dust, dirt, grease, old paint or other substances, loose particles. Porous bases should be thoroughly treated in advance with the working solution Primer-concentrate 1:10 TM Lacrysilil and dried. The glued material should be kept in an unfolded state until completely straightened. Stir the glue until it is homogeneous and evenly apply a sufficient amount to the contact surface of the base and distribute it evenly. Connect the contact surfaces, press evenly and firmly and fix until the glue sets for approximately 10-15 minutes. If the surface of the base has a limited ability to absorb moisture, the adhesive layer should be kept outdoors for 10-15 minutes before connecting to the surface of the material. The initial setting time of the glue depends on the temperature and humidity of the environment and is about 15 minutes, during which the material on the surface of the base can be corrected. The freshly applied layer of glue is milky white in color, becoming transparent when dry. Do not mix with other types of glues, do not dilute with water.

TECHNICAL SPECIFICATIONS MATERIAL		BASIS							
		Concrete, Drywall	Stone, Marble	Chipboard, Plywood	Ceramic, Porcelain	Metals	Plastic	Polystyrene	
Base	acrylate copolymer	Concrete, Brick, Gypsum Drywall	Stone, Granite, Marble	Wood, chipboard, MDF, fiberboard, plywood	Tile, Ceramics, Porcelain	Primed metal	Plastic, PVC	Polystyrene foam	
Application temperature	+5°C ... +35°C	✓	✓	✓	✓	✓	✓	✓	
Drying time	24 - 48 hours	✓	✓	✓	✓	✓	✓	✓	
Color	transparent	✓	✓	✓	✓	✓	✓	✓	
Operating temperature	-40°C ... +80°C	✓	✓	✓	✓	✓	✓	✓	
Cost	0.25 - 0.5 kg/m <sup>2</sup>	✓	✓	✓	✓	✓	✓	✓	
Packaging	1kg; 2.5kg; 5kg	✓	✓	✓	✓	✓	✓	✓	
Shelf life	18 months	✓	✓	✓	✓	✓	✓	✓	

# ACRYLIC MOUNTING ADHESIVES

## ACRYLIC MOUNTING GLUE «MULTI-GREEN»



### MULTI-GREEN GLUE is a convenient and reliable means of installing artificial grass carpet.

Ready-to-use glue. One-component glue for fixing various types of artificial grass carpet to mineral (concrete, cement-sand, brick, stone), wooden (board, plywood, fiberboard, OSB), water-absorbing surfaces of materials on woven and non-woven bases when arranging artificial lawns, carrying out interior and exterior decorative finishing works.

**APPLICATION:** working surfaces must be strong, dry, free from dust, dirt, old paint, grease stains, other contaminants and poorly bonded layers to the base. Porous materials and surfaces with signs of shedding should be pre-treated with a solution of Primer Concentrate 1:10 TM Lacrysil and dried. Mix the glue thoroughly in a consumer container until homogeneous, apply a sufficient amount to the working surface with a notched trowel and leave open for 10-15 minutes. Firmly, evenly press the coating to the adhesive layer and carefully seal the seam. After 20-30 minutes, re-seal, remove excess glue with a cloth or sponge, and fix the edges of the glued materials until the seam is finally formed. Work

should be carried out at a temperature of the base and environment (+10...+35)°C and a relative humidity of no more than 60%.

The optimal conditions for applying the adhesive are a temperature of (20±2)°C at an air humidity of 50%. The time for the final formation of the adhesive joint is 48-72 hours and depends on the state of the environment. Avoid during formation contact of the seam with moisture. The exposure time of the coating before operation is 72 hours and under adverse conditions, between dense surfaces with limited ability to absorb moisture, may increase.

TECHNICAL SPECIFICATIONS MATERIAL		BASIS					
		Concrete	Gypsum	cardboard	Stone	Materials	
Base	acrylate copolymer	Artificial grass carpet	✓	✓	✓	✓	✓
Application temperature	+10°С ... +35°С	Linoleum, parquet, laminate	✓	✓		✓	✓
Drying time	24 - 48 hours	PVC coating	✓	✓	✓	✓	✓
Color	green	Vinyl coatings	✓	✓	✓	✓	✓
Operating temperature	-40°С ... +80°С	Carpeting	✓	✓	✓	✓	✓
Cost	0.7 - 0.8 kg/m <sup>2</sup>	Wood, chipboard, fiberboard, MDF	✓	✓	✓	✓	✓
Packaging	1.5kg; 3kg; 6kg; 15kg						
Shelf life	18 months						

# ACRYLIC MOUNTING ADHESIVES

## ACRYLIC MOUNTING GLUE ULTRA LIP



### ULTRA LIP ADHESIVE is a convenient and reliable means of installing flooring systems

The glue is ready to use. The complex of properties makes it possible to effectively use the product for long-term fixation of floor coverings of various types - basic and baseless linoleum, carpet on woven and non-woven bases, parquet and laminate, ceramic tiles, various wood-based products and products of its processing on traditional surfaces when carrying out repair and construction work indoors and outdoors. The glue forms a waterproof, vapor-permeable layer that is able to maintain consumer properties for a long time in a significant range of temperature fluctuations; it is fireproof.

**APPLICATION:** working surfaces must be dry, strong and even, free from dust, dirt, grease, old paint or other substances, loose particles. Porous bases should be thoroughly treated in advance with the working solution of Primer-concentrate 1:10 TM Lacrysil and dried. The glued material should be kept in an unfolded state until completely straightened. Mix the glue until it is homogeneous and evenly apply a sufficient amount to the contact surface of the base and distribute it evenly. Connect the contact surfaces, press evenly and firmly and fix. The initial setting time of the glue is about 15 minutes, during which the material on the surface of the base can be corrected. When applying the glue, one of the contact surfaces must absorb moisture; under adverse conditions, the time for forming a joint may increase. Do not mix with other types of glue.

TECHNICAL SPECIFICATIONS MATERIAL		BASIS			
		Biobrete,	Gypsum Drywall	Chipboard,	Chipboard,
Base	acrylate copolymer	Linoleum	✓	✓	✓
Application temperature	+5ўў ... +35ўў	Parquet	✓	✓	✓
Drying time	24 - 48 hours	PVC coating	✓	✓	✓
Color	beige	Vinyl coatings	✓	✓	✓
Operating temperature	-40ўў ... +80ўў	Carpeting	✓	✓	✓
Cost	0.25 - 0.2 kg/m <sup>2</sup>	Wood, chipboard, fiberboard, MDF, plywood	✓	✓	✓
Packaging	1.2kg; 3kg; 6kg; 12kg				
Shelf life	18 months				

# ACRYLIC MOUNTING ADHESIVES

## ACRYLIC MOUNTING GLUE

### "TILES, MOSAIC, STONE"

MOISTURE-RESISTANT  
OUTSIDE AND INSIDE

HIGH  
ADHESIVE

ECOLOGICAL

VIBRATION RESISTANT  
TEMPERATURES

ATMOSPHERE  
RESISTANT

PAINT

EUROPEAN  
QUALITY

ANTIFUNGAL

TERM OF SERVICE

### ADHESIVE "TILES, MOSAIC, STONE" - is an effective means of carrying out facing works

The product is intended for long-term fixation of ceramic, glass and faience tiles, artificial and natural stone materials, mosaic elements of all types on traditional building surfaces of floors and wall panels; the adhesive can be used when installing plasterboard structures, thermal insulation systems and "warm floors". The adhesive is characterized by excellent adhesion to the surfaces of the vast majority of building materials and is an attractive alternative to the use of dry building mixtures; intended for use both outdoors - balconies, terraces, facades, and indoors, in particular with high humidity - in kitchens, laundries, bathrooms, etc.

**APPLICATION:** working surfaces must be dry, strong and even, free from dust, dirt, mold, grease stains, remnants of old coatings, other layers and particles of material poorly bonded to the base. Surfaces of natural stone products, such as those with signs of destruction or a porous structure, must be thoroughly treated in advance with a solution of Primer-concentrate 1:10 TM Lacrysil and dried.

Mix the glue until smooth and apply a sufficient amount to one of the contact surfaces. When working on surfaces that can satisfactorily absorb moisture, apply the glue in a continuous layer 1-6 mm thick and evenly distribute it by "combing" with a notched trowel, removing the excess; the distance between the glue grooves should exceed their thickness. If the surfaces have limited moisture absorption, then apply the glue in dots to ensure the possibility of removing moisture during the formation of the joint; avoid merging of the glue strips as a result of pressing the surfaces.

Carefully connect the contact surfaces, press firmly and evenly and fix for a few seconds; the adhesive layer should be as thin as possible within the limits allowed by the fixing technology of certain types of constructs. The time for correcting the construct is 15-20 minutes.

#### TECHNICAL SPECIFICATIONS

<b>Base</b>	acrylate copolymer
<b>Application temperature</b>	+5°C ... +35°C
<b>Drying time</b>	24 - 48 hours
<b>Color</b>	beige
<b>Operating temperature</b>	-40°C ... +80°C
<b>Cost</b>	wheels - 0.3 - 0.4 kg/m <sup>2</sup> with a spatula - 0.8 - 1.2 kg/m <sup>2</sup>
<b>Packaging</b>	1.5kg; 3kg; 8kg; 15kg
<b>Shelf life</b>	18 months

#### BASIS

Concrete, Brick, Gypsum, Drywall
Stone, Granite, Marble
Wood, particleboard, fiberboard, MDF, plywood, OSB
Tile, Ceramics, Mosaic

# ACRYLIC MOUNTING ADHESIVES

## TREPLACE GLUE «LUX ADHESIVE»



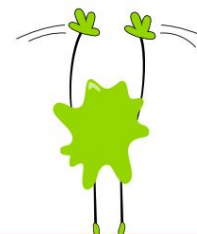
NEW  
technology



## GLUE "LUX ADHESIVE" - a convenient and reliable tool for gluing wallpaper

The glue is intended for long-term fixation of fiberglass wallpaper and canvases, all types of heavy wallpaper with textile and vinyl coating on paper, non-woven and polyester bases, embossed, structural, tufted wallpaper, jute fabrics on the surfaces of traditional building bases - concrete, foam concrete, brick, drywall, plaster, wood and products based on its processing.

**3 APPLICATION:** working surfaces must be dry, strong and even, thoroughly cleaned of dust, dirt, mold, grease stains, remnants of old coatings and paint, other contaminants and particles of material poorly bonded to the base. Surfaces that show signs of destruction or have a porous structure should be thoroughly treated in advance with a solution of Primer-concentrate 1:10 TM Lacrysil and dried. Mix the glue until homogeneous and apply in sufficient quantity to one of the contact surfaces and distribute evenly. Carefully connect the contact surfaces, press evenly and firmly and fix until the glue sets for approximately 10-15 minutes. Remove excess fresh glue and remaining contaminants with a damp material. The time for the formation of the adhesive joint depends on many factors, and is usually 4-8 hours, but under adverse conditions it can increase to 24 hours. Wallpaper can be painted no earlier than a day after gluing. When completing or suspending work, to preserve the consumer properties of the glue, the consumer container should be closed in a timely manner.



### TECHNICAL SPECIFICATIONS

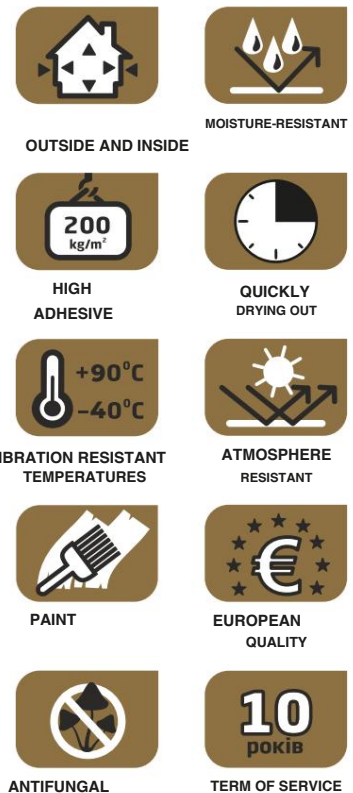
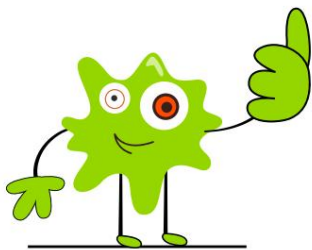
Base	acrylate copolymer
Application temperature	+5°С ... +35°С
Drying time	24 years old
Color	white
Operating temperature	-40°С ... +80°С
Cost	0.14 - 0.3 kg/m <sup>2</sup>
Packaging	2.5kg; 5kg; 10kg
Shelf life	18 months

### BASIS

Concrete, Brick, Gypsum, Drywall	✓
Stone, Granite, Marble	✓
Wood, particleboard, fiberboard, MDF, plywood, OSB	✓
Tile, Ceramics, Porcelain	✓
Primed metal, Galvanizing	✓
Plastic, PVC	✓
Polystyrene foam	✓

# RUBBER MOUNTING ADHESIVES

## RUBBER MOUNTING GLUE "SUPER POWERFUL"



### RUBBER GLUE "SUPER STRONG" is a powerful, convenient means of assembling heavy building structures

The glue is an effective means of long-term fixation of heavy structures - furniture elements, window sills, wall panels, installation of window and door blocks, exterior cladding panels, floor and roofing systems, thermal insulation using fiberglass materials and mineral wool blocks, various construction and decorative finishing materials, in particular rubber products. The glue is characterized by excellent rheological properties and excellent adhesion to the surfaces of the vast majority of construction materials: concrete, brick, gypsum, drywall, plaster, ferrous and non-ferrous metals and alloys based on them, ceramic tiles, glass, mirrors and mosaics, wood and products based on its processing products, cork, bamboo, various plastic and rubber products, woven and non-woven materials, basic and non-basic linoleum, all types of carpets.

**APPLICATION:** the contact surfaces must be dry, strong and even, thoroughly cleaned of dust, dirt, rust, ice and frost, mold, oily and resinous stains, remnants of old coatings, other contaminants, layers and particles of material that are poorly bonded to the base. Surfaces that show signs of destruction or have a porous structure should be thoroughly treated in advance with a solution of Primer-concentrate 1:10 TM Lacrysil and dried. Carefully apply glue in sufficient quantity, according to the recommendations of the material manufacturer, in stripes or dots on one of the contact surfaces, avoiding applying glue in a continuous layer and merging the stripes as a result of pressing the surfaces. Connect the contact surfaces, press for uniform distribution of the glue, separate, withstand 5 min. in the open air, connect again, press firmly, evenly and fix the structure until the glue sets. When installing floor and roof coverings and heavy structures, follow the recommendations of the material manufacturer. Remove excess fresh glue with a material moistened with organic solvent / gasoline. The initial setting time of the glue at room conditions is 10 minutes and depends on the state of the environment. The time for the final formation of the adhesive joint is 24-48 hours and depends on many factors. Under adverse conditions, the time for the formation of the joint may increase.

### TECHNICAL SPECIFICATIONS

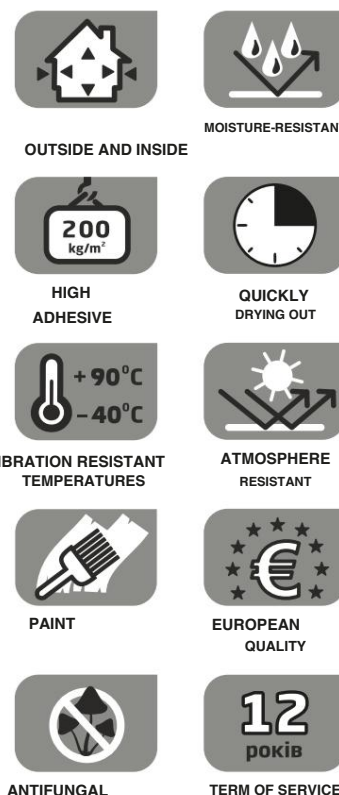
Base	synthetic rubbers and resins
Application temperature	-10°C ... +35°C
Drying time	24 - 48 hours
Color	beige
Operating temperature	-40°C ... +90°C
Cost	0.2 - 0.5 kg/m <sup>2</sup>
Packaging	0.36kg
Shelf life	12 months

### BASIS

MATERIAL	Concrete	Stone	Tile	Glass	Wood	Plastic	Aluminum	Steel	Rubber	Aluminum alloys
---	✓	✓	✓	✓	✓	✓	✓	✓	✓	✓
---	✓	✓	✓	✓	✓	✓	✓	✓	✓	✓
Wood, chipboard, MDF, fiberboard, plywood	✓	✓	✓	✓	✓	✓	✓	✓	✓	✓
Tile, Ceramics, Porcelain	✓	✓	✓	✓	✓	✓	✓	✓	✓	✓
Black and galvanized metal, Stainless steel	✓	✓	✓	✓	✓	✓	✓	✓	✓	✓
Rubber, PVC	✓	✓	✓	✓	✓	✓	✓	✓	✓	✓
Aluminum, Copper and their alloys	✓	✓	✓	✓	✓	✓	✓	✓	✓	✓
Roof tiles, slate, tin	✓	✓	✓	✓	✓	✓	✓	✓	✓	✓

# RUBBER MOUNTING ADHESIVES

## RUBBER MOUNTING GLUE "SUPER POWERFUL"



### RUBBER GLUE "SUPER STRONG" is a powerful, convenient means of assembling heavy building structures

The glue is an effective means of long-term fixation of heavy structures - furniture elements, window sills, wall panels, installation of window and door blocks, exterior cladding panels, floor and roofing systems, thermal insulation using fiberglass materials and mineral wool blocks, various construction and decorative finishing materials, in particular rubber products. The glue is characterized by excellent rheological properties and excellent adhesion to the surfaces of the vast majority of construction materials: concrete, brick, gypsum, drywall, plaster, ferrous and non-ferrous metals and alloys based on them, ceramic tiles, glass, mirrors and mosaics, wood and products based on its processing products, cork, bamboo, various plastic and rubber products, woven and non-woven materials, basic and non-basic linoleum, all types of carpets.

**APPLICATION:** the contact surfaces must be dry, strong and even, thoroughly cleaned of dust, dirt, rust, ice and frost, mold, oily and resinous stains, remnants of old coatings, other contaminants, layers and particles of material that are poorly bonded to the base. Surfaces that show signs of destruction or have a porous structure should be thoroughly treated in advance with a solution of Primer-concentrate 1:10 TM Lacrysil and dried. Carefully apply glue in sufficient quantity, according to the recommendations of the material manufacturer, in stripes or dots on one of the contact surfaces, avoiding applying glue in a continuous layer and merging the stripes as a result of pressing the surfaces. Connect the contact surfaces, press for uniform distribution of the glue, separate, withstand 5 min. in the open air, connect again, press firmly, evenly and fix the structure until the glue sets. When installing floor and roof coverings and heavy structures, follow the recommendations of the material manufacturer. Remove excess fresh glue with a material moistened with organic solvent / gasoline. The initial setting time of the glue at room conditions is 10 minutes and depends on the state of the environment. The time for the final formation of the adhesive joint is 24-48 hours. and depends on many factors. Under adverse conditions, the time for the formation of the joint may increase.

### TECHNICAL SPECIFICATIONS

Base	synthetic rubbers and resins
Application temperature	-10°С ... +35°С
Drying time	24 - 48 hours
Color	transparent
Operating temperature	-40°С ... +90°С
Cost	10-15 g/m <sup>2</sup> .
Packaging	50g; 0.28kg
Shelf life	12 months

### BASIS

MATERIAL	Concrete	Stone	Marble	Glass	Chipboard	Ceramic	Porcelain	Aluminum	Steel	Alloys
---	✓	✓	✓	✓	✓	✓	✓	✓	✓	✓
---	✓	✓	✓	✓	✓	✓	✓	✓	✓	✓
Wood, chipboard, MDF, fiberboard, plywood	✓	✓	✓	✓	✓	✓	✓	✓	✓	✓
Tile, Ceramics, Porcelain	✓	✓	✓	✓	✓	✓	✓	✓	✓	✓
Black and galvanized metal, Stainless steel	✓	✓	✓	✓	✓	✓	✓	✓	✓	✓
Rubber, PVC	✓	✓	✓	✓	✓	✓	✓	✓	✓	✓
Aluminum, Copper and their alloys	✓	✓	✓	✓	✓	✓	✓	✓	✓	✓
Roof tiles, slate, tin	✓	✓	✓	✓	✓	✓	✓	✓	✓	✓

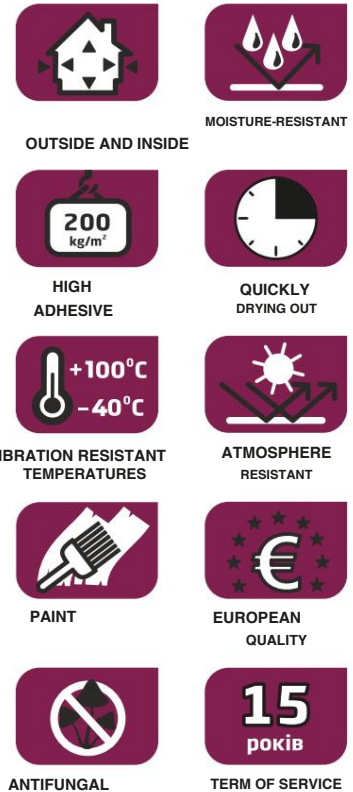
# MOUNTING ADHESIVE ON THE BASIS

## MS-POLYMER

### MOUNTING ADHESIVE ON THE BASIS

### MS-POLYMER

## «SUPER FIX»



### MS POLYMER ADHESIVE "SUPER FIX" is a powerful, convenient means of assembling heavy building structures

Universal waterproof and weatherproof adhesive for effective long-term bonding of structures of a wide range of building and decorative finishing materials. It has excellent adhesion to the surfaces of the vast majority of traditional building materials, is water and weather resistant. High initial setting speed and strength of the adhesive joint, which is formed even in conditions of extreme humidity. Preservation of the operational properties of the joint in the range (-40...+100)°C.

**APPLICATION:** working surfaces must be strong and even, thoroughly cleaned of dust, dirt, mold, grease stains, other contaminants and particles of material that are poorly bonded to the base. When starting work, moderately moisten the contact surfaces and make sure that the temperature of the product and the environment is within (+5...+40)°C. Evenly fill the working hole with a solid layer of sealant and form a seam of the desired configuration with a spatula moistened with soapy water. To accelerate the formation, the surface of the layer can be additionally moistened. Using the product as an assembly adhesive, apply it in sufficient quantity in stripes or dots on one of the contact surfaces, press firmly, evenly and fix. The fixation time, depending on the forming conditions, is from 20 min. to 48 hours. Strictly avoid applying the adhesive in a solid layer and merging the stripes when connecting the surfaces; minimum layer thickness – 1 mm, maximum seam width – 5 mm. The seam formation rate decreases over time and averages 3 mm/day; the final formation time is 24-48 hours and depends on the condition and nature of the materials and the state of the environment.

Do not use for permanent immersion in water.

TECHNICAL SPECIFICATIONS	BASIS MATERIAL									
	Concrete, Brick, Gypsum, Drywall	Stone, Granite, Marble	Mirror, Glass	Wood, chipboard, MDF, fiberboard, plywood	Tile, Ceramics, Porcelain	Black and galvanized metal, Stainless steel	Plastic	Polystyrene foam	Aluminum, Copper and their alloys	Roof tiles, slate, tin
Base	hybrid MC polymer									
Application temperature	-5°C ... +40°C									
Drying time	24 - 48 hours									
Color	white									
Operating temperature	-40°C ... +100°C									
Cost	15 m sq. (seam 5x5 mm)									
Packaging	0.4kg									
Shelf life	12 months									

# MOUNTING ADHESIVE ON THE BASIS MS-POLYMER

## MS-POLYMER ADHESIVE AND SEALANT "UNIVERSAL"



OUTSIDE AND INSIDE



MOISTURE-RESISTANT

HIGH  
ADHESIVEQUICKLY  
DRYING OUTVIBRATION RESISTANT  
TEMPERATURESATMOSPHERE  
RESISTANT

PAINT

EUROPEAN  
QUALITY

ELASTIC



TERM OF SERVICE

**MS POLYMER "UNIVERSAL" ADHESIVE-SEALANT** combines the properties of an adhesive and a sealant, is a functional substitute for a wide range of adhesive products

The product is a universal, effective means of long-term bonding of building structures and decorative finishing materials. a wide range of materials: concrete, brick, stone, slate, gypsum, drywall, plaster, ceramic tiles, porcelain, wood and its products, cork, bamboo, ferrous metal, stainless and galvanized steel, non-ferrous metals and their alloys, many plastics, enameled and glass products, mirrors in any combination indoors and outdoors in industry and everyday life. The adhesive is effective in the installation of sandwich panels, ventilation, thermal insulation and roofing systems, etc.

The product is a universal means of sealing all types of seams, joints and gaps between the surfaces of the vast majority of building structures; it is used for sealing double-glazed windows, sealing and waterproofing window and door blocks, joints of structures operating under significant vibration loads, and for finishing facades.

**APPLICATION:** working surfaces must be strong and even, thoroughly cleaned of dust, dirt, mold, grease stains, other contaminants and particles of material that are poorly bonded to the base. When starting work, moderately moisten the contact surfaces and make sure that the temperature of the product and the environment is within (+5...+40)°C. Evenly fill the working hole with a solid layer of sealant and form a seam of the desired configuration with a spatula moistened with soapy water. To accelerate the formation, the surface of the layer can be additionally moistened. Using the product as an assembly adhesive, apply it in sufficient quantity in stripes or dots on one of the contact surfaces, press firmly, evenly and fix. The fixation time, depending on the forming conditions, is from 30 min. to 48 hours. Strictly avoid applying the adhesive in a solid layer and merging the stripes when connecting the surfaces; minimum layer thickness – 1 mm, maximum seam width – 5 mm. The seam formation rate decreases over time and averages 2 mm/day; the final formation time is 24-48 hours and depends on the condition and nature of the mothers and the state of the environment.

### TECHNICAL SPECIFICATIONS

Base	hybrid MC polymer
Application temperature	+5°С ... +40°С
Drying time	24 - 48 hours
Color	white, transparent
Operating temperature	-40°С ... +100°С
Cost	15 m.pog. (seam 5x5 mm)
Packaging	white - 85g; 0.4kg transparent - 50g; 0.28kg
Shelf life	12 months

### BASIS

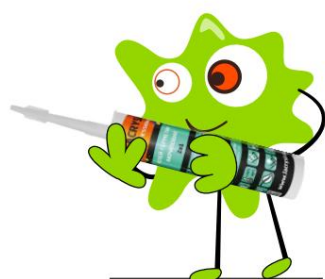
#### MATERIAL

	Brick	crete	Stone	Granite	Glass	Marble	Chipboard	MDF	Ceramic	Porcelain	Galvanized Plastic	Polystyrene	Aluminum
Concrete, Brick, Gypsum, Drywall	✓	✓	✓	✓	✓	✓	✓	✓	✓	✓	✓	✓	✓
Stone, Granite, Marble	✓	✓	✓	✓	✓	✓	✓	✓	✓	✓	✓	✓	✓
Mirror, Glass	✓	✓	✓	✓	✓	✓	✓	✓	✓	✓	✓	✓	✓
Wood, chipboard, MDF, fiberboard, plywood	✓	✓	✓	✓	✓	✓	✓	✓	✓	✓	✓	✓	✓
Tile, Ceramics, Porcelain	✓	✓	✓	✓	✓	✓	✓	✓	✓	✓	✓	✓	✓
Black and galvanized metal, Stainless steel	✓	✓	✓	✓	✓	✓	✓	✓	✓	✓	✓	✓	✓
Plastic	✓	✓	✓	✓	✓	✓	✓	✓	✓	✓	✓	✓	✓
Aluminum, Copper and their alloys	✓	✓	✓	✓	✓	✓	✓	✓	✓	✓	✓	✓	✓
Roof tiles, slate, tin	✓	✓	✓	✓	✓	✓	✓	✓	✓	✓	✓	✓	✓

# ACRYLIC ADHESIVE-SEALANT

## ACRYLIC ADHESIVE-SEALANT

# "2v1"



## ACRYLIC ADHESIVE-SEALANT "2 in 1" is a universal dual-purpose adhesive product

The product is intended for reliable, long-term fixation of elements of building structures outside and inside premises - floor covering and thermal insulation systems, glass, plasterboard, plastic and wooden products to traditional bases; provides effective sealing of seams, joints and cracks, in particular in structures operating in conditions of high humidity, in particular in premises for sanitary and hygienic purposes.

**APPLICATION:** working surfaces must be dry, strong and even, thoroughly cleaned of dust, dirt, mold, grease stains, remnants of old coatings and other contaminants and layers that are poorly bonded to the base. Surfaces of natural stone products or those that show signs of destruction or a porous structure should be pre-treated with a solution of Primer-concentrate 1:10 TM Lacrysil and dried. Immediately before work, make sure that the temperature of the product and the environment is within (+5...+35)°C. Carefully and evenly fill the working cavity with adhesive sealant or apply it in dots or stripes on one of the contact surfaces of the mounting structures, connect and evenly press firmly and fix. Avoid merging of the stripes when pressing the working surfaces. The width of the seam should not exceed 12 mm.

The initial setting time of the adhesive-sealant at room conditions on surfaces capable of absorbing moisture is 15 minutes; the final layer formation time is 2 days and under adverse conditions can increase to 5 days.

### TECHNICAL SPECIFICATIONS

Base	acrylate copolymer
Application temperature	+5ÿÿ ... +35ÿÿ
Drying time	48 hours
Color	transparent
Operating temperature	-40ÿÿ ... +70ÿÿ
Cost	15 running meters (seam 4x4 mm)
Packaging	0.15kg; 0.28kg
Shelf life	18 months

BASIS MATERIAL	Basis							
	Bdokrete, Stone,	Mirror,...	Plastic, Polystyrene					
Concrete, Brick, Gypsum, Drywall	✓	✓	✓	✓	✓	✓	✓	✓
Stone, Granite, Marble	✓	✓	✓	✓	✓	✓	✓	✓
Mirror, Glass	✓	✓	✓	✓	✓	✓	✓	✓
Wood, chipboard, MDF, fiberboard, plywood	✓	✓	✓	✓	✓	✓	✓	✓
Tile, Ceramics, Porcelain	✓	✓	✓	✓	✓	✓	✓	✓
Primed metal	✓	✓	✓	✓	✓	✓	✓	✓
Plastic, PVC	✓	✓	✓	✓	✓	✓	✓	✓
Polystyrene foam	✓	✓	✓	✓	✓	✓	✓	✓

## PVA glue

# "MODIFIED"



## MODIFIED PVA glue is a convenient tool for interior decorative and finishing works

A reliable means of long-term fixation of wallpaper, glass wallpaper, fabric materials, products based on cellulose materials, plasterboard and leather on traditional building substrates - concrete, brick, plasterboard, plaster, wood, etc.; an effective plasticizer and adhesive additive for modifying cement-sand, chalk and gypsum mortars.

**APPLICATION:** working surfaces must be dry, strong and even, thoroughly cleaned of dust, dirt, mold, grease stains, remnants of old coatings, other contaminants, layers and particles of material poorly bonded to the base. If the working surfaces show signs of destruction, they should be pre-treated with a solution of Primer-concentrate 1:10 TM Lacrysil and dried. Immediately before carrying out the work, make sure that the temperature of the glue, contact surfaces and the environment is within the working range (+18...+35)°C, and the relative humidity of the air does not exceed 50%. Mix the glue until it is homogeneous, carefully apply a sufficient amount and evenly distribute it on one of the contact surfaces. Connect the contact surfaces, press evenly and firmly and fix until the glue sets for approximately 10-15 minutes. Remove excess fresh glue and remaining dirt with a damp material. The time for the final formation of the adhesive joint is 6-10 hours and depends on the thickness of the joint, the uniformity of distribution, the condition and nature of the material of the contact surfaces, environmental parameters and may increase under adverse conditions.

## TECHNICAL SPECIFICATIONS

Base	acrylate copolymer
Application temperature	+18ўў ... +35ўў
Drying time	24 years old
Color	white, transparent after drying
Operating temperature	-30ўў ... +70ўў
Cost	0.15 - 0.2 kg/m2
Packaging	0.9kg; 2.5kg; 4.5kg; 9kg
Shelf life	12 months

BASIS MATERIAL	BASIS			
	Biocrete,	GypsumDrywall	Fiberboard,	Polystyrene
Gypsum, Drywall	✓	✓	✓	✓
Leather, Fabric	✓	✓	✓	✓
Wallpaper, Paper	✓	✓	✓	✓
Wood, chipboard, fiberboard, MDF, plywood	✓	✓	✓	✓
Tile, Ceramics, Porcelain	✓	✓	✓	✓
Polystyrene foam	✓	✓	✓	✓

# PVA GLUES

## WATERPROOF PVA GLUE D3 "UNIVERSAL"



### PVA GLUE D3 is a high-quality, one-component, waterproof product for interior work

The adhesive is a reliable means of long-term fixation of floor coverings made of base and baseless linoleum, carpet on woven and non-woven bases, plasterboard-based boards and products, wood and its processing products, cellulose products, wallpaper, glass wallpaper, leather, ceramic and PVC tiles, many other decorative and finishing materials on traditional building bases; intended for fast, high-quality gluing of products made of wood of all species, plywood and veneer using hot and cold methods; effective plasticizer and adhesive additive for modification of cement-sand, chalk and gypsum mortars. Excellent water resistance of the joint (class D3 according to EN 204) determines the effectiveness of the use of the adhesive for work in rooms with constant high humidity.

**3 APPLICATION:** working surfaces must be dry, strong and even, thoroughly cleaned of dust, dirt, mold, grease stains, remnants of old coatings, other contaminants, layers and particles of material poorly bonded to the base. If working surfaces show signs of destruction, they should be treated with a solution of Primer-concentrate 1:10 TM Lacrysil and dried. Immediately before carrying out work, make sure that the temperature of the adhesive, contact surfaces and the environment is within the operating range (+18...+35)°C, and the relative humidity of the air does not exceed 70%. Before use, mix the adhesive until homogeneous, apply in sufficient quantity (avoid

excess) and evenly distribute on one of the contact surfaces. Connect the contact surfaces, evenly and Press firmly and hold until the glue sets for approximately 10-15 minutes. Remove excess fresh glue with a damp cloth. The time for the final formation of the adhesive joint is 4-8 hours and depends on the layer thickness, uniformity of distribution, condition and nature of the material of the contact surfaces, environmental parameters and may increase under adverse conditions.

### TECHNICAL SPECIFICATIONS

<b>Base</b>	polyvinyl acetate
<b>Application temperature</b>	+18ўў ... +35ўў
<b>Drying time</b>	24 years old
<b>Color</b>	white, transparent after drying
<b>Operating temperature</b>	-40ўў ... +100ўў
<b>Cost</b>	0.15 - 0.2 kg/m2
<b>Packaging</b>	0.15kg; 0.4kg; 0.75kg; 2kg; 10kg; 18kg
<b>Shelf life</b>	12 months

BASIS MATERIAL	BASIS			
	Brick	GypsumDrywall	Chipboard	Polystyrene
Gypsum, Drywall	✓	✓	✓	✓
Leather, Fabric	✓	✓	✓	✓
Wallpaper, Paper	✓	✓	✓	✓
Wood, chipboard, fiberboard, MDF, plywood	✓	✓	✓	✓
Tile, Ceramics, Porcelain	✓	✓	✓	✓
Polystyrene foam	✓	✓	✓	✓

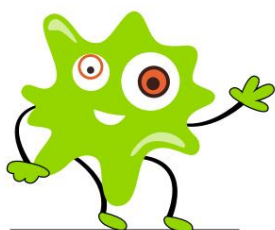


**SEALANTS**

---

# ACRYLIC SEALANTS

## ACRYLIC SEALANT "UNIVERSAL"



OUTSIDE AND INSIDE



MOISTURE-RESISTANT



ELASTIC



ECOLOGICAL



VIBRATION RESISTANT TEMPERATURES



ATMOSPHERE RESISTANT



PAINT



EUROPEAN QUALITY



ANTIFUNGAL



TERM OF SERVICE

### ACRYLIC SEALANT "UNIVERSAL" is an elastic, waterproof and antifungal product

The complex of physicochemical properties determines the effectiveness of the product for sealing cracks, seams and joints of various building structures - window and door blocks, baseboards and window sills, thermal insulation systems, etc. during construction, decorative and finishing and repair works. The sealant is environmentally friendly, does not contribute to the development of mold and fungi, is resistant to insects and UV radiation, which determines its priority when installing thermal insulation systems. The sealant forms a dense, waterproof, but vapor-permeable layer, resistant to mechanical loads and aggressive external influences, retains consumer properties for a long time in a significant range of temperature fluctuations.

**APPLICATION:** work surfaces must be strong, dry, free from dust, dirt, rust, old paint, and other contaminants. Porous substrates should be thoroughly pre-treated with Primer-concentrate 1:10 TM Lacrysil. Apply the sealant to the surface evenly in a continuous layer. Form the seam with a spatula or a special template to give the seam a finished look. Application temperature from +5°C to +35°C. Low temperatures and high humidity slow down the hardening process. The width of the seam should not exceed 12 mm. The time for the final formation of a 4 mm wide sealant layer on moisture-absorbing surfaces is 2 days, on surfaces that are not able to absorb moisture - 5 days, depending on the environmental conditions. Do not apply the sealant during rain, do not use in contact with stainless steel for seams that are constantly under water (swimming pools, aquariums).

### TECHNICAL SPECIFICATIONS

<b>Base</b>	acrylate copolymer
<b>Application temperature</b>	+5°С ... +35°С
<b>Drying time</b>	24 - 48 hours
<b>Color</b>	white
<b>Operating temperature</b>	-40°С ... +80°С
<b>Cost</b>	15 running meters (seam 4x4 mm)
<b>Packaging</b>	0.4kg
<b>Shelf life</b>	18 months

BASIS MATERIAL	Basis								
	Concrete, Brick	Stone, Marble	Mirror, Glass	Wood, chipboard, MDF, fiberboard, plywood	Tile, Ceramics, Porcelain	Primed metal	Plastic, PVC	Polystyrene foam	Polystyrene
Concrete, Brick, Gypsum, Drywall	✓	✓	✓	✓	✓	✓	✓	✓	✓
Stone, Granite, Marble	✓	✓	✓	✓	✓	✓	✓	✓	✓
Mirror, Glass	✓	✓	✓	✓	✓	✓	✓	✓	✓
Wood, chipboard, MDF, fiberboard, plywood	✓	✓	✓	✓	✓	✓	✓	✓	✓
Tile, Ceramics, Porcelain	✓	✓	✓	✓	✓	✓	✓	✓	✓
Primed metal	✓	✓	✓	✓	✓	✓	✓	✓	✓
Plastic, PVC	✓	✓	✓	✓	✓	✓	✓	✓	✓
Polystyrene foam	✓	✓	✓	✓	✓	✓	✓	✓	✓

# ACRYLIC SEALANTS

## ACRYLIC SEALANT "SANITARY"



**ACRYLIC SEALANT "SANITARY" is an elastic, waterproof and antifungal product that is used in conditions of extreme humidity.**

The product is intended for sealing cracks, seams and joints of building structures during construction, decorative finishing and repair work, in particular in rooms operated in conditions of high humidity. The sealant is environmentally friendly and does not pose a threat to human health and the environment, does not contribute to the development of parasitic microflora, is resistant to UV radiation and aggressive external influences; forms a waterproof but vapor-permeable layer capable of maintaining consumer properties for a long time in a significant range of temperature fluctuations.

**APPLICATION:** working surfaces must be dry, strong and even, free from dust, dirt, mold, grease stains, remnants of old coatings and other contaminants, particles of material poorly bonded to the base. Natural stone surfaces or those with signs of destruction or a porous structure should be thoroughly treated in advance with a solution of Primer-concentrate 1:10 TM Lacrysil and dried. Immediately before carrying out the work, make sure that the temperature of the sealant and the environment is within the range (+5...+35)°C. Carefully fill the working cavity with a uniform continuous layer of sealant and a spatula moistened in soapy water, or use a special template to form a seam of the desired configuration. The geometric dimensions of the seam should not exceed 12 mm in width; The time for the initial setting of the sealant at room conditions on surfaces capable of absorbing moisture is 20-30 minutes. The time for the final formation of the layer is approximately 2 days, depends on a combination of many parameters and under adverse conditions can increase to 5 days.

### TECHNICAL SPECIFICATIONS

Base	acrylate copolymer
Application temperature	+5ўў ... +35ўў
Drying time	48 hours
Color	white
Operating temperature	-40ўў ... +80ўў
Cost	15 running meters (seam 4x4 mm)
Packaging	0.15kg; 0.28kg
Shelf life	18 months

BASIS MATERIAL	Basis							
	Concrete, Brick, Gypsum, Drywall	Stone, Granite, Marble	Mirror, Glass	Wood, chipboard, MDF, fiberboard, plywood	Tile, Ceramics, Porcelain	Primed metal	Plastic, PVC	Polystyrene foam
Concrete, Brick, Gypsum, Drywall	✓	✓	✓	✓	✓	✓	✓	✓
Stone, Granite, Marble	✓	✓	✓	✓	✓	✓	✓	✓
Mirror, Glass	✓	✓	✓	✓	✓	✓	✓	✓
Wood, chipboard, MDF, fiberboard, plywood	✓	✓	✓	✓	✓	✓	✓	✓
Tile, Ceramics, Porcelain	✓	✓	✓	✓	✓	✓	✓	✓
Primed metal	✓	✓	✓	✓	✓	✓	✓	✓
Plastic, PVC	✓	✓	✓	✓	✓	✓	✓	✓
Polystyrene foam	✓	✓	✓	✓	✓	✓	✓	✓

# ACRYLIC SEALANTS

## ACRYLIC SEALANT "NON-FERROUS"



### ACRYLIC SEALANT "COLOR" is a professional product for decorative and protective treatment of wooden building structures

The sealant is a carefully balanced water-based composition based on copolymer acrylate dispersions, mineral fillers, modern colorants and multipurpose modifiers, which provide an optimal complex of physicochemical characteristics and consumer properties of the product; does not pose a threat to human health and the environment, does not contribute to the development of parasitic microflora, is resistant to insects and UV radiation. The sealant forms a dense, waterproof, elastic layer, resistant to mechanical loads and aggressive external influences, retains consumer properties for a long time in a significant range of temperature fluctuations. A wide range of colors makes the product an aesthetically attractive tool for use in wooden structures, especially made of natural wood, and for decorating building facades. The product is intended for sealing seams, gaps, cracks and chips in products and structures made of wood and products based on its processing, sealing joints between elements of thermal insulation systems, facade decoration, brickwork, plastered surfaces with other building structures, sealing gaps in plank and parquet floors, cracks and joints between skirting boards and plattbands, wall and floor, joints between timber and panel, contact points of wooden structures with roof elements, for processing end cuts of logs, sealing inter-log and inter-crown joints of a log house.

**APPLICATION:** working surfaces must be dry, strong and even, thoroughly cleaned of dust, dirt and mold, oily and resinous stains, remaining dirt and particles of material poorly bonded to the base. Before use, make sure that the temperature of the sealant and the environment is within (+10...+35)°C. Evenly fill the working cavity with a solid layer of sealant and form a seam of the desired configuration. The dimensions of the seam should not exceed 5x5 mm. The time for the formation of the initial setting of the sealant at room conditions on surfaces that can satisfactorily absorb moisture is 10-30 minutes. The time for the final formation of the sealant layer is 24 hours, depends on many parameters and may increase under adverse conditions, therefore, contact of the seam with water should be avoided for 48 hours.

TECHNICAL SPECIFICATIONS		BASIS MATERIAL								
		Concrete	Stone	Mirror	Wood	Plywood	Porcelain	Metals	Plastic	Polystyrene
Base	acrylate copolymer	Concrete, Brick, Gypsum, Drywall	Stone, Granite, Marble	Mirror, Glass	Wood, chipboard, MDF, fiberboard, plywood	Tile, Ceramics, Porcelain	Primed metal	Plastic, PVC	Polystyrene foam	
Application temperature	+10... +35°C	✓	✓	✓	✓	✓	✓	✓	✓	✓
Drying time	24 - 48 hours	✓	✓	✓	✓	✓	✓	✓	✓	✓
Color	pine, oak, walnut, wenge	✓	✓	✓	✓	✓	✓	✓	✓	✓
Operating temperature	-40... +80°C	✓	✓	✓	✓	✓	✓	✓	✓	✓
Cost	12 running meters (seam 4x4 mm)	✓	✓	✓	✓	✓	✓	✓	✓	✓
Packaging	0.4kg	✓	✓	✓	✓	✓	✓	✓	✓	✓
Shelf life	18 months	✓	✓	✓	✓	✓	✓	✓	✓	✓

# SILICONE SEALANTS

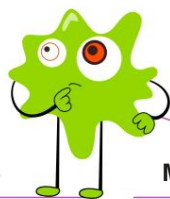
## SILICONE SEALANT "UNIVERSAL"



### "UNIVERSAL" SILICONE SEALANT – forms an elastic, non-shrinking and waterproof seam

**PURPOSE:** for sealing seams and joints during construction work, for sealing expansion joints and joints, for insulating structures from external influences.

**APPLICATION:** working surfaces must be dry, strong and even, thoroughly cleaned of dust, dirt, ice and frost, mold, grease stains, remnants of old coatings and other contaminants and particles of material that are poorly bonded to the base. Surfaces that show signs of destruction or have a porous structure should be thoroughly treated in advance with a solution of Primer-concentrate 1:10 TM Lacrysil and dried. Before use, make sure that the temperature of the product and the environment is within (+0...+40)°C. Fill the working cavity with a uniform continuous layer of sealant and form a seam of the desired configuration using a special template or spatula moistened with soapy water. Recommended geometric dimensions of the seam are (2-6)x(2-6) mm; the time for the final formation of the layer is 24-48 hours and depends on many parameters. Attention! Avoid direct contact with natural stone, metal and mirror surfaces.



BASIS

### TECHNICAL SPECIFICATIONS

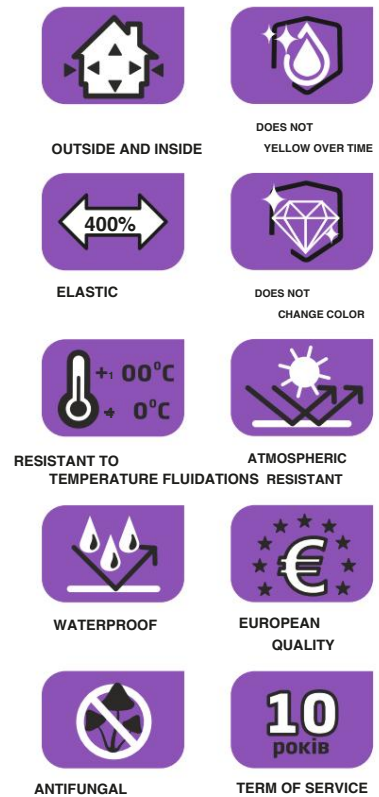
Base	modified silicones
Application temperature	+0ўў ... +40ўў
Drying time	24 - 48 hours
Color	white, transparent
Operating temperature	-40ўў ... +100ўў
Cost	12 running meters (seam 6x6 mm)
Packaging	white - 50g; 0.28kg transparent - 48g; 0.28kg
Shelf life	18 months

### MATERIAL

	Blockrete,	Glass	Whopboard,	Tile#orcelaMetalubstantiaRidstic,	Polystyrene
Concrete, Brick, Gypsum, Drywall	✓	✓	✓	✓	✓
Stone, Granite, Marble	✓	✓	✓	✓	✓
Mirror, Glass	✓	✓	✓	✓	✓
Wood, chipboard, MDF, fiberboard, plywood	✓	✓	✓	✓	✓
Tile, Ceramics, Porcelain	✓	✓	✓	✓	✓
Primed metal	✓	✓	✓	✓	✓
Plastic, PVC	✓	✓	✓	✓	✓
Polystyrene foam	✓	✓	✓	✓	✓

# SILICONE SEALANTS

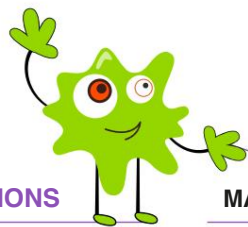
## SILICONE SEALANT "SANITARY"



### SILICONE SEALANT "SANITARY" – forms an antifungal, waterproof and elastic seam

**PURPOSE:** for sealing seams and joints in bathrooms, shower cabins, swimming pools, toilets, basements, kitchens and other rooms and buildings operated in conditions of high humidity.

**APPLICATION:** working surfaces must be dry, strong and even, thoroughly cleaned of dust, dirt, ice and frost, mold, grease stains, remnants of old coatings and other contaminants and particles of material that are poorly bonded to the base. Surfaces that show signs of destruction or have a porous structure should be thoroughly treated in advance with a solution of Primer-concentrate 1:10 TM Lacrysil and dried. Before use, make sure that the temperature of the product and the environment is within (+0...+40)°C. Fill the working cavity with a uniform continuous layer of sealant and form a seam of the desired configuration using a special template or spatula moistened with soapy water. Recommended geometric dimensions of the seam are (2-6)x(2-6) mm; the time for the final formation of the layer is 24-48 hours and depends on many parameters. Attention! Avoid direct contact with natural stone, metal and mirror surfaces.



#### BASIS

#### TECHNICAL SPECIFICATIONS

<b>Base</b>	modified silicones
<b>Application temperature</b>	+0ўў ... +40ўў
<b>Drying time</b>	24 - 48 hours
<b>Color</b>	white, transparent
<b>Operating temperature</b>	-40ўў ... +100ўў
<b>Cost</b>	12 running meters (seam 6x6 mm)
<b>Packaging</b>	white - 50g; 0.28kg transparent - 48g; 0.28kg
<b>Shelf life</b>	18 months

#### MATERIAL

	Concrete, Brick, Gypsum, Drywall	Glass	Chipboard, Plywood	Ceramics, Porcelain	Plastic, PVC	Polystyrene
Concrete, Brick, Gypsum, Drywall	✓	✓	✓	✓	✓	✓
Glass	✓	✓	✓	✓	✓	✓
Wood, chipboard, MDF, fiberboard, plywood	✓	✓	✓	✓	✓	✓
Tile, Ceramics, Porcelain	✓	✓	✓	✓	✓	✓
Primed metal	✓	✓	✓	✓	✓	✓
Plastic, PVC	✓	✓	✓	✓	✓	✓
Polystyrene foam	✓	✓	✓	✓	✓	✓

# SILICATE SEALANTS

## SILICATE SEALANTER "FIREPLACES AND STOVES"



### SILICATE SEALANT "FIREPLACES AND STOVES" is an effective fire-resistant, ready-to-use sealant

The sealant is an effective means of sealing all types of seams, joints and gaps between building structures and elements. systems operating in conditions of direct contact with fire, extreme temperatures and aggressive environments. Attention! Do not use the sealant in conditions of constant immersion in water of central heating systems, gas equipment and elastic joints between structural elements. Avoid contact of the product with skin and mucous membranes.

**APPLICATION:** working surfaces must be dry, strong and even, thoroughly cleaned of dust, dirt, rust, mold, grease stains, remnants of old coatings, other contaminants, layers and particles of material poorly bonded to the base. Mineral surfaces that show signs of destruction or have a porous structure should be thoroughly treated in advance with a solution of Primer-concentrate 1:10 TM Lacrysil and dried. Metal surfaces should be protected by phosphating or special anti-corrosion primers. Immediately before carrying out work, make sure that the temperature of the sealant, contact surfaces and the environment is within the specified working interval +5 ... +35 ° C. The sealant is applied in layers - the first layer is thin, the rest is applied abundantly on the formed previous one. Fill the working cavity with a uniform continuous layer of sealant; recommended joint sizes – width from 3 to 25 mm with an overlap on adjacent surfaces, thickness – no more than 5 mm. Immediately after application, level the sealant layer with a spatula moistened in soapy water. The formation time of the sealant layer is 24-48 hours and depends on the size of the joint, the condition and nature of the material of the contact surfaces and environmental conditions, and under adverse conditions it can increase to 5 days. To give the sealant layer water- and frost-resistant properties, after final formation, it should be exposed to direct fire or high temperatures.

### TECHNICAL SPECIFICATIONS

Base	modified silicones
Application temperature	+5°С ... +35°С
Drying time	24 - 48 hours
Color	black
Operating temperature	-40°С ... +1500°С
Cost	15 running meters (seam 4x4 mm)
Packaging	0.55kg
Shelf life	18 months

BASIS MATERIAL	BASIS				
	Block	Stone	MARBLE	Glass	Ceramic/Porcelain/Metal
Concrete, Brick, Gypsum	✓	✓	✓	✓	✓
Stone, Granite, Marble	✓	✓	✓	✓	✓
Glass	✓	✓	✓	✓	✓
Tile, Ceramics, Porcelain	✓	✓	✓	✓	✓
Primed metal	✓	✓	✓	✓	✓



# ACRYLIC SEALANTS

## FOR ASSEMBLY SEAMS

### ACRYLIC SEALANT

## "MOUNTING SEAMS "A" EXTERNAL



### ACRYLIC SEALANT FOR ASSEMBLY JOINTS "A" is a high-quality sealant and sealant used outdoors.

Product for sealing seams, joints and gaps between elements of window, balcony, facade and stained glass structures, polyurethane foam seams of thermal insulation systems, window and door blocks and their protection from UV radiation; characterized by excellent adhesion to the surfaces of the vast majority of traditional building materials; allows all-season use outdoors.

**APPLICATION:** working surfaces must be dry, strong and even, thoroughly cleaned of dirt, layers and particles of material that are poorly bonded to the base; polyurethane foam in thermal insulation joints and technological gaps must be neatly cut evenly, free of tears and surface defects; the presence of dripping moisture or frost on the surface is unacceptable. Surfaces of products that show signs of destruction or a porous structure must be thoroughly treated with a solution of Primer-concentrate 1:10 TM Lacrysil and dried. Immediately before carrying out work, make sure that the temperature of the contact surfaces and the environment is within the range (-20...+35)°C. If the temperature of the sealant is less than 18°C (resulting in high viscosity of the composition), the product should be kept for 24 hours at room conditions (+18...+25)°C and mixed until homogeneous. Evenly fill the working cavity with a solid layer of sealant; recommended joint dimensions are 3-5 mm wide, 3-3.5 mm thick; apply the seam with an overlap of 1-3 mm on the adjacent surface. Filling of large cavities is carried out sequentially as the previous layer is formed. Immediately after application, level the layer with a spatula moistened in soapy water, or form a seam of the desired configuration. The time for forming the sealant layer is 24-48 hours, depends on many factors and under adverse conditions may increase to 6 days. Avoid contact of the finishing layer with water for 72 hours.

#### TECHNICAL SPECIFICATIONS

<b>Base</b>	acrylate copolymer
<b>Application temperature</b>	-20°С ... +35°С
<b>Drying time</b>	24 - 48 hours
<b>Color</b>	white
<b>Operating temperature</b>	-40°С ... +80°С
<b>Cost</b>	0.13 kg/m <sup>2</sup> of the
<b>Packaging</b>	600ml; 1.2kg; 3kg; 7kg
<b>Shelf life</b>	18 months

BASIS MATERIAL	Basis								
	Block	Stone	Mirror	Chipboard	Ceramic	Porcelain	Substrate	Plastic	Polystyrene
Concrete, Brick, Gypsum, Drywall	✓	✓	✓	✓	✓	✓	✓	✓	✓
Stone, Granite, Marble	✓	✓	✓	✓	✓	✓	✓	✓	✓
Mirror, Glass	✓	✓	✓	✓	✓	✓	✓	✓	✓
Wood, chipboard, MDF, fiberboard, plywood	✓	✓	✓	✓	✓	✓	✓	✓	✓
Tile, Ceramics, Porcelain	✓	✓	✓	✓	✓	✓	✓	✓	✓
Primed metal	✓	✓	✓	✓	✓	✓	✓	✓	✓
Plastic, PVC	✓	✓	✓	✓	✓	✓	✓	✓	✓
Polystyrene foam	✓	✓	✓	✓	✓	✓	✓	✓	✓

# ACRYLIC SEALANTS

## FOR ASSEMBLY SEAMS

### ACRYLIC SEALANT

### "MOUNTING SEAMS "B"



WITHIN PREMISES



MOISTURE-RESISTANT



ELASTIC



ECOLOGICAL



VIBRATION RESISTANT TEMPERATURES



ATMOSPHERE RESISTANT



PAINT



EUROPEAN QUALITY



ANTIFUNGAL



TERM OF SERVICE

**Acrylic sealant for assembly joints "B" is a high-quality sealing and sealing agent used indoors.**

Product for sealing seams, joints and gaps between elements and eliminating defects in interior structures, protecting polyurethane foam joints of window and door blocks to wall structures indoors from UV radiation. The product is characterized by excellent adhesion to the surfaces of the vast majority of traditional building materials.

**APPLICATION:** working surfaces must be dry, strong and even, thoroughly cleaned of dirt, layers and particles of material that are poorly bonded to the base; polyurethane foam in thermal insulation joints and technological gaps must be neatly cut evenly, without cracks and surface defects. Surfaces of products that show signs of destruction or a porous structure must be thoroughly treated with a solution of Primer-concentrate 1:10 TM Lacrysil and dried. Immediately before carrying out work, make sure that the temperature of the sealant, contact surfaces and the environment is within the range (+5...+35)°C. Mix the product until homogeneous and evenly fill the working cavity with a continuous layer of sealant; recommended joint dimensions are 3-5 mm wide, 3-3.5 mm thick; the joint should be applied with an overlap of 1-3 mm on the adjacent surface. Filling of large cavities is carried out sequentially as the previous layer is formed. Immediately after application, level the layer with a spatula moistened in soapy water, or form a seam of the desired configuration. The time for forming the sealant layer is 24-48 hours, depends on many factors and may increase under adverse conditions. Avoid contact of the finishing layer with water for 72 hours.

TECHNICAL SPECIFICATIONS		BASIS								
		MATERIAL								
		Concrete, Brick, Gypsum, Drywall	Stone, Granite, Marble	Mirror, Glass	Wood, chipboard, MDF, fiberboard, plywood	Tile, Ceramics, Porcelain	Primed metal	Plastic, PVC	Polystyrene foam	Polystyrene
Base	acrylate copolymer	✓	✓	✓	✓	✓	✓	✓	✓	✓
Application temperature	+5°С ... +35°С	✓	✓	✓	✓	✓	✓	✓	✓	✓
Drying time	24 - 48 hours	✓	✓	✓	✓	✓	✓	✓	✓	✓
Color	white	✓	✓	✓	✓	✓	✓	✓	✓	✓
Operating temperature	-40°С ... +80°С	✓	✓	✓	✓	✓	✓	✓	✓	✓
Cost	0.13 kg/m2 of the	✓	✓	✓	✓	✓	✓	✓	✓	✓
Packaging	600ml; 1.2kg; 3kg; 7kg	✓	✓	✓	✓	✓	✓	✓	✓	✓
Shelf life	18 months	✓	✓	✓	✓	✓	✓	✓	✓	✓



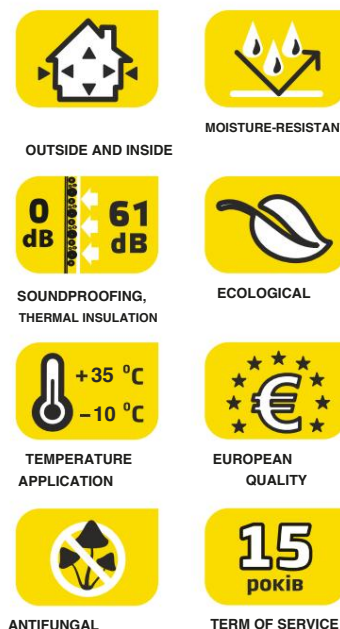
**MOUNTING POWDER**

---

# HOUSEHOLD MOUNTING POWDER

## ALL-SEASON POLYURETHANE MOUNTING FOAM

«30», «60», «65», «70»



### POLYURETHANE MOUNTING FOAM FOR HOUSEHOLD USE – ensures reliable installation and sealing of door and window blocks, filling cracks, gaps, cavities, holes, fixing pipes in cavities

One-component polyurethane assembly foam in aerosol packaging for use with an adapter tube. It is characterized by high adhesion to the vast majority of building surfaces: concrete, brick, plaster, wood, metal, etc. The formed foam is resistant to aging processes, atmospheric influences, moisture, mold, fungi and insects. Requires protection from UV radiation. Does not deform structures due to the dimensional stability of the formed foam. Can be used in various climatic conditions.

**APPLICATION:** foam is used at a temperature of  $-10...+35^{\circ}\text{C}$  and a relative humidity of at least 70%. To ensure maximum yield and optimal physical and mechanical properties of the foam, the can should be kept at a temperature of  $+18...+30^{\circ}\text{C}$  for at least 24 hours, mix thoroughly (shake for at least 1 min.) immediately before use and apply to work surfaces, previously cleaned of dust, dirt, grease, ice, frost and other layers. At positive temperatures, the surfaces should be moistened immediately before applying the foam.

The working position of the can is upside down. During operation, the can should be shaken periodically. The working space should be filled 2/3 of the volume from bottom to top. A space with a depth of more than 4 cm and a width of more than 6 cm should be filled in layers. The next layer is applied to the previous one, formed to a state of detachment and moistened separately. Remove excess hardened foam, and paint or plaster the surface to protect it from UV radiation. Remove unhardened foam from contaminated surfaces with TM Lacrysil cleaner. **Avoid contact of the cleaner with expanded polystyrene!**

### TECHNICAL SPECIFICATIONS

Application temperature	$-10^{\circ}\text{C} \dots +35^{\circ}\text{C}$
Balloon temperature	$+15^{\circ}\text{C} \dots +30^{\circ}\text{C}$
Time to peel off	5 - 30 minutes**
Curing time	0.5 - 12 hours**
Full polymerization time	12 - 48 hours**

\*\*depends on ambient temperature and humidity

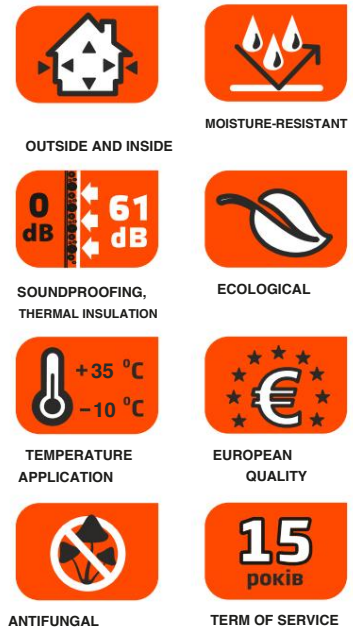
Base	foamed polyurethane composition
Secondary expansion	200 - 400%*
Color	beige
Packaging	320ml, 750ml, 800ml, 850ml
Shelf life	18 months

\*depends on foam and environment temperature

# PROFESSIONAL MOUNTING POWDER

## PROFESSIONAL ALL-SEASON INSTALLATION FOAM

«60», «65», «70»



### PROFESSIONAL POLYURETHANE INSTALLATION FOAM – ensures reliable installation and sealing of door and window blocks, filling cracks, gaps, cavities, holes, fixing pipes in cavities

One-component polyurethane assembly foam in aerosol packaging for use with an applicator gun. It is characterized by high adhesion to the vast majority of building surfaces: concrete, brick, plaster, wood, metal, etc. The formed foam is resistant to aging processes, atmospheric influences, moisture, mold, fungi and insects. Requires protection from UV radiation. It is used for installation and fixation of window and door blocks, thermal insulation and roofing systems, filling cavities and cracks, in particular around pipeline networks and cable routes, for sealing joints, hydro-, sound- and thermal insulation of building structures, connection and installation of materials in industry and everyday life.

**APPLICATION:** foam is used at a temperature of  $-10...+35^{\circ}\text{C}$  and a relative humidity of not less than 70%. To ensure maximum yield and optimal physical and mechanical properties of the foam, the can should be kept at a temperature of  $+18...+30^{\circ}\text{C}$  for at least 24 hours, immediately before use, mix thoroughly (shake for at least 1 min.) and apply to working surfaces, previously cleaned of dust, dirt, grease, ice, frost and other layers. At positive temperatures, immediately before applying the foam, the surfaces should be moistened. The working position of the can is upside down. During operation, the can should be shaken periodically. The working space should be filled by 2/3 of the volume from bottom to top. A space with a depth of more than 4 cm and a width of more than 6 cm should be filled in layers. The next layer is applied to the previous one formed to a state of detachment and moistened separately. Remove excess hardened foam and paint or plaster the surface to protect it from UV radiation. Remove unhardened foam from the applicator gun and contaminated surfaces with TM Lacrysil cleaner. **Avoid contact of the cleaner with polystyrene foam!**

#### TECHNICAL SPECIFICATIONS

Application temperature	$-10^{\circ}\text{C} \dots +35^{\circ}\text{C}$
Balloon temperature	$+15^{\circ}\text{C} \dots +30^{\circ}\text{C}$
Time to peel off	5 - 30 minutes**
Curing time	0.5 - 6 hours**
Full polymerization time	12 - 48 hours**

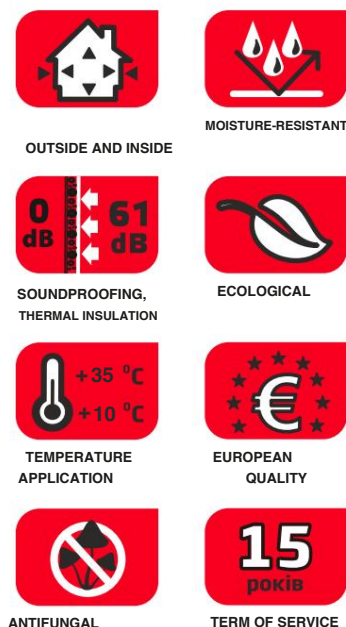
\*\*depends on ambient temperature and humidity

Base	foamed polyurethane composition
Secondary expansion	150 - 250%*
Color	beige
Packaging	750ml, 800ml, 850ml
Shelf life	18 months

\*depends on foam and environment temperature

# FIRE-RESISTANT INSTALLATION FOAMS

## PROFESSIONAL MOUNTING FOAM FIRE RESISTANT "B1"



### PROFESSIONAL POLYURETHANE INSTALLATION FOAM – ensures reliable installation and sealing of door and window blocks, filling cracks, gaps, cavities, holes, fixing pipes in cavities

One-component polyurethane assembly foam in aerosol packaging for use with an applicator gun. Characterized by a high degree of fire resistance, flammability group B1 for filling installation holes in fire barriers and building structures. Requires protection from UV radiation!

**APPLICATION:** the product is used at a temperature of +10°C to +30°C and a relative humidity of at least 70%. To ensure maximum yield and obtain optimal physical and mechanical properties of the foam, the canister is kept at a temperature of +18°C to +30°C for at least 24 hours before use. Immediately before use, the contents of the canister are thoroughly mixed (shake vigorously for at least 1 minute), the protective cap is removed, the applicator gun is attached to the valve and the foam is applied to the working surfaces, which have been thoroughly cleaned of dust, dirt, grease, layers that do not adhere well to the base, and moderately moistened. The working position of the canister is upside down. During operation, the canister is periodically shaken. The working hole is filled 2/3 of the volume from bottom to top. A space deeper than 4 cm and wider than 6 cm is filled in layers. The next layer is applied to the previous one, additionally moistened, no earlier than after 3 hours. The qualitative and quantitative characteristics of the foam significantly depend on the conditions of use and the condition of the applicator gun. Attention! During the initial hardening (3-6 hours depending on environmental conditions) the foam has a fragile structure and becomes elastic during final shaping. Excess formed foam is removed no earlier than 24 hours after application, and the surface should be painted or plastered to protect it from UV radiation. Fresh foam contamination from surfaces and the mounting gun is removed with TM Lacrysil mounting foam cleaner.

**Avoid contact of the cleaner with polystyrene products! Hardened foam can only be removed mechanically.**

#### TECHNICAL SPECIFICATIONS

Application temperature	+10°С ... +35°С
Balloon temperature	+15°С ... +30°С
Time to peel off	5 - 30 minutes**
Curing time	3 - 6 hours**
Full polymerization time	24 years**

\*\*depends on ambient temperature and humidity

Base	foamed polyurethane composition
Secondary expansion	150 - 250%*
Color	red
Packaging	800ml
Shelf life	18 months

\*depends on foam and environment temperature

# HOUSEHOLD GLUE-FOAM

## ALL-SEASON HOUSEHOLD GLUE-FOAM



### POLYURETHANE FOAM ADHESIVE FOR HOUSEHOLD USE – a convenient and reliable means of installing all types of thermal insulation boards and panels on the facades and foundations of buildings, fixing gas and foam blocks

One-component polyurethane adhesive foam in aerosol packaging for use with an adapter tube. Used for fastening all types of thermal insulation boards, foam and gas blocks from the outside and inside of premises, for mounting wall panels, filling expansion joints, cavities and cracks, for sealing joints and mounting a wide range of building materials in industry and everyday life. The formed adhesive foam is resistant to aging processes, atmospheric influences, the action of moisture, mold, fungi and insects. Requires protection from UV radiation.

**APPLICATION:** foam adhesive is used at a temperature of -10...+35°C and a relative humidity of at least 70%. To ensure maximum yield and optimal physical and mechanical properties of foam adhesive, the can should be kept at a temperature of +18...+30°C for at least 24 hours, mix thoroughly immediately before use (shake for at least 1 min.). Clean the working surfaces from dust, dirt, grease, ice, frost, other layers and, at positive temperatures, moisten immediately before applying foam adhesive. Apply foam adhesive to the surface in stripes or dots in a satisfactory manner, according to the recommendations of the material manufacturer. Leave the foam adhesive layer in the air for 2-3 min., firmly, evenly press the glued structure and fix for 10 min. (fixing time may increase depending on the state of the environment, the weight of the structure and the nature of the surfaces). When installing thermal insulation systems, the adhesive foam is applied to the surface of the thermal insulation boards. The working position of the can is upside down. During operation, the can should be shaken periodically. Excess hardened adhesive foam should be removed, and the surface of the joint should be painted or plastered to protect the material from UV radiation. Remove unhardened foam from contaminated surfaces with TM Lacrysil cleaner. **Avoid contact of the cleaner with polystyrene foam surfaces!**

### TECHNICAL SPECIFICATIONS

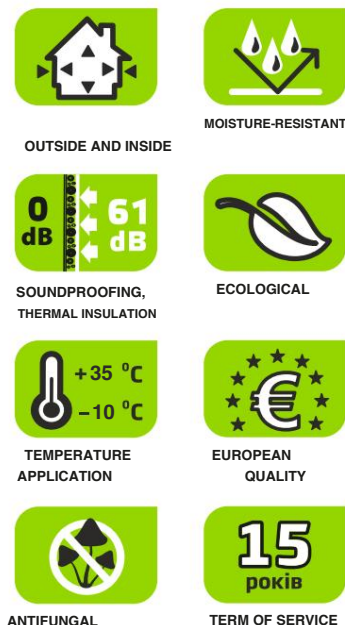
Application temperature	-10°C ... +35°C	Base	foamed polyurethane composition
Balloon temperature	+15°C ... +30°C	Secondary expansion	150 - 250%*
Time to peel off	5 - 30 minutes**	Color	orange
Curing time	0.5 - 6 hours**	Packaging	800ml
Full polymerization time	12 - 48 hours**	Shelf life	18 months

\*\*depends on ambient temperature and humidity

\*depends on foam and environment temperature

# PROFESSIONAL GLUE-FOAMS

## PROFESSIONAL ALL-SEASON GLUE-FOAM



### PROFESSIONAL POLYURETHANE FOAM ADHESIVE – an ideal tool for professional installation of all types of thermal insulation boards and panels on facades and foundations of buildings, fixing gas and foam blocks

One-component polyurethane adhesive foam in aerosol packaging for use with an applicator gun. Used for fastening all types of thermal insulation boards, foam and gas blocks indoors and outdoors, for mounting wall panels, filling expansion joints, cavities and cracks, for sealing joints and mounting a wide range of building materials in industry and everyday life. The formed adhesive foam is resistant to aging processes, weathering, moisture, mold, fungi and insects. Requires protection from UV radiation.

**APPLICATION:** foam adhesive is used at a temperature of  $-10...+35^{\circ}\text{C}$  and a relative humidity of at least 70%. To ensure maximum yield and optimal physical and mechanical properties of foam adhesive, the can should be kept at a temperature of  $+18...+30^{\circ}\text{C}$  for at least 24 hours, mix thoroughly immediately before use (shake for at least 1 min.). Clean the working surfaces from dust, dirt, grease, ice, frost, other layers and, at positive temperatures, moisten immediately before applying foam adhesive. Apply foam adhesive to the surface in stripes or dots in a satisfactory manner, according to the recommendations of the material manufacturer. Leave the foam adhesive layer in the air for 2-3 min., firmly, evenly press the glued structure and fix for 10 min. (fixing time may increase depending on the state of the environment, the weight of the structure and the nature of the surfaces). When installing thermal insulation systems, the adhesive foam is applied to the surface of the thermal insulation boards. The working position of the can is upside down. During operation, the can should be shaken periodically. Excess hardened adhesive foam should be removed, and the surface of the joint should be painted or plastered to protect the material from UV radiation. Remove unhardened adhesive foam from the applicator gun and contaminated surfaces with TM Lacrysil cleaner. **Avoid contact of the cleaner with polystyrene foam surfaces!**

### TECHNICAL SPECIFICATIONS

Application temperature	$+10^{\circ}\text{C} \dots +35^{\circ}\text{C}$
Balloon temperature	$+15^{\circ}\text{C} \dots +30^{\circ}\text{C}$
Time to peel off	5 - 30 minutes**
Curing time	0.5 - 6 hours**
Full polymerization time	12 - 48 hours**

\*\*depends on ambient temperature and humidity

Base	foamed polyurethane composition
Secondary expansion	100 - 150%*
Color	orange
Packaging	800ml
Shelf life	18 months

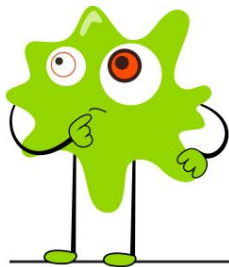
\*depends on foam and environment temperature

# PROFESSIONAL GLUE-FOAMS

## PROFESSIONAL GLUE-FOAM

# 60 SECONDS

**NEW  
PRODUCT**



OUTSIDE AND INSIDE



MOISTURE-RESISTANT



SOUNDPROOFING,  
THERMAL INSULATION



ECOLOGICAL



TEMPERATURE  
APPLICATION



EUROPEAN  
QUALITY



ANTIFUNGAL



TERM OF SERVICE

## PROFESSIONAL ADHESIVE-FOAM "60 SECONDS" – an effective means of quick professional installation of thermal insulation systems and building structures

One-component polyurethane adhesive foam is used for fastening thermal insulation boards inside and outside the premises, sealing joints, thermal insulation of building structures, foam and gas blocks, connecting and installing materials in industry and everyday life.

**APPLICATION:** "60 seconds" adhesive foam is used in the temperature range of -5...+35°C at a relative humidity of at least 70%. To ensure maximum yield and obtain optimal physical and mechanical properties of the adhesive foam, the can should be kept at room temperature for at least 24 hours, mix thoroughly immediately before use (shake for at least 1 min.) and apply to work surfaces previously cleaned of dust, dirt, grease, ice and frost. At positive temperatures, immediately before applying the foam, the surfaces should be slightly moistened. The working position of the can is upside down. Apply the adhesive foam to the plate in strips of 1-1.5 cm around the perimeter at a distance of 3-5 cm from the edge, and then crosswise. Keep the adhesive foam layer in the air for 1 min, and then firmly, evenly press it to the base and fix it for 1-2 min. During operation, the can should be shaken periodically. The hardened foam adhesive should be painted or plastered to protect it from the destructive effects of UV radiation. The foam adhesive hardly sticks to the polyethylene film for 60 seconds, therefore, before carrying out the work, the surfaces on which the foam adhesive is not desirable to get on should be protected with a film. Unhardened foam adhesive from the surfaces and the applicator gun can be removed with the TM Lacrysil foam cleaner. Hardened foam adhesive is removed only mechanically. Avoid contact of the cleaner with polystyrene foam surfaces! The quantitative and qualitative characteristics of the foam adhesive depend on the condition of the applicator gun.

The appearance of the ALL-SEASON HOUSEHOLD GLUE-FOAM "60 SECONDS" 320 and 800ml is expected

### TECHNICAL SPECIFICATIONS

Application temperature	-5ÿÿ ... +35ÿÿ	Base	foamed polyurethane composition
Balloon temperature	+15ÿÿ ... +30ÿÿ	Secondary expansion	100 - 150%*
Time to peel off	3 - 5 minutes*	Color	turquoise
Curing time	5 - 30 minutes*	Packaging	800ml
Full polymerization time	12 - 48 hours*	Shelf life	18 months

\*depends on ambient temperature and humidity

# MOUNTING FOAM CLEANER

## MOUNTING FOAM CLEANER



OUTSIDE AND INSIDE



360° VALVE



LEAVES NO  
FOLLOWED



EFFECTIVE  
CLEANING



TEMPERATURE  
APPLICATION



EUROPEAN  
QUALITY

### **ASSEMBLY FOAM CLEANER** – is an indispensable means of maintaining the assembly gun-applicator and a reliable means of removing greasy dirt

The product is a convenient multifunctional tool for cleaning the applicator gun immediately after using mounting foam and adhesive foam, removing fresh dirt from the aerosol can valve, from things and construction surfaces, tools and clothing; provides effective removal of stains from the vast majority of paint and varnish materials. The cleaner is a unique means of degreasing construction surfaces in preparation for decorative and finishing works. Attention! Avoid contact with polystyrene foam products.

**APPLICATION:** remove the protective cap, shake the contents of the cleaner can vigorously. Attach the spray nozzle included in the kit to the can valve. Disconnect the applicator gun from the polyurethane foam can and press the trigger to remove foam residues from the cavity of the applicator gun. Press the nozzle to activate the can and spray the cleaner in a dosed manner onto the contaminated parts of the gun until the contamination is completely removed; the working position of the can with the cleaner is with the bottom up. Free the aerosol valve of the can from fresh polyurethane foam residues if it is intended to be used further. Remove the spray nozzle and attach the applicator gun to the cleaner canister by thread, press the trigger of the gun and use the aerosol jet to remove the foam residue from the inner cavity and nozzle of the applicator gun. Leave the cleaner inside the gun for 2-3 minutes and press the trigger of the gun again. Repeat the flushing operation until a satisfactory result is achieved in removing contaminants; disconnect the gun from the cleaner canister and put a protective cap on the cross-ring of the canister.

### TECHNICAL SPECIFICATIONS

Base	mixture of organic solvents and propellants
Application temperature	-10°ÿ ... +35°ÿ
Color	transparent
Packaging	500ml
Shelf life	18 months



Recommended use in the “primer  
+ paint TM LACRYSIL” system

# PAINTS AND COVERAGE



# INTERIOR PAINTS

## INTERIOR PAINT FOR CEILINGS AND WALLS "MAGIC WATERFALL"

ACRYLIC EXCLUSIVE



Named after **the Burbun Waterfall** - a true natural treasure of Ukraine, hidden among picturesque forests and mountain cliffs.

*This is a place where nature reveals its pristine beauty, and the sound of water reminds us of the eternal cycle of life.*



WITHIN PREMISES



SAFE



WASHING CLASS



CLASS OF COVERING ABILITIES



DEEP MATTE



FUNGICIDAL PROTECTION



SILKY-MATTE



AESTHETIC AND MECHANICALLY STABLE



SILKY



DILUENT WATER

## INTERIOR ACRYLIC WATER-BASED PAINT "MAGIC WATERFALL" – exclusive premium acrylic interior paint

Creates a sophisticated finish that enhances the luxury of any interior. Thanks to its unique formula, developed for the most demanding projects, this paint combines aesthetic perfection with the highest functionality.

Magic Watercolour paint is ideal for elegant spaces with high levels of use – from luxurious living rooms to elite hotel suites.

The paint is easily applied to any porous substrates: cement and cement-lime plasters, drywall, wood, decorative wallpaper.

Can be used on metal surfaces after appropriate priming. Extremely economical to use, environmentally friendly, free of toxic solvents and heavy metals. This is the choice of those who seek a perfect result and a perfect style in their space.

### COLORS

WHITE

TONED  
IN PASTEL  
COLORS

WINDOW

TONED  
IN SATURATION  
COLORS

### PACKAGING



# INTERIOR PAINTS

## INTERIOR PAINT FOR CEILINGS AND WALLS "SUNNY VALLEY"

ACRYLIC SUPER COVERING



Named after the **Ukrainian Sunflower**, a true symbol of fertility and prosperity, fun and well-being.

- INSIDE THE ROOMS
- APPLICATION TEMPERATURE: +5°C ... +35°C
- WASHING CLASS: 1
- FUNGICIDAL PROTECTION: 3
- AESTHETIC AND MECHANICALLY DURABLE: MATTE
- COVERING CAPACITY CLASS: 1
- WATER THINNER: ECO
- SAFE

### INTERIOR ACRYLIC WATER-BASED PAINT "SONYACHNA DOLYNA" is a reliable decorative and protective material for walls and ceilings in general and special-purpose premises

Provides a durable, super-matte finish with high vapor permeability and rich whiteness.

Does not contain harmful components.

The environmentally friendly product is suitable for general and specialized premises, such as medical facilities, kitchens, catering facilities, schools and kindergartens, where both aesthetic properties and resistance to frequent cleaning.

The paint withstands frequent washing with detergents and disinfectants. The paint is suitable for application to various types of surfaces, such as concrete, plaster and drywall, ensuring uniform coverage and reliable adhesion.

#### COLORS

<b>WHITE</b>	<b>WINDOW</b>
TINTED IN PASTEL COLORS	TONE INTO Saturated Colors

#### PACKAGING



# INTERIOR PAINTS

## INTERIOR PAINT FOR BATHROOM AND KITCHEN

### "MAJOR PEAKS"

ACRYLIC ANTIFUNGAL



Named after **Mount Hoverla** (Polish: *Howerla*, Romanian: *Hovârla*, Hungarian: *Hóvár*) is the highest peak of the Ukrainian Carpathians and the highest point of Ukraine, its height is 2,061 m above sea level.



WITHIN PREMISES



WASHING CLASS



MATTE



CLASS OF COVERING ABILITIES



SAFE



TEMPERATURE APPLICATION



FUNGICIDAL PROTECTION



AESTHETIC AND MECHANICALLY STABLE



DILUENT WATER

### INTERIOR ACRYLIC ANTIFUNGAL PAINT "MAJESTIC PEAKS" – exclusive standard-class acrylic interior paint

Interior acrylic paint "Velychny Vershiny" is an ideal solution for decorating walls and ceilings in rooms with high humidity, such as bathrooms and kitchens, rooms with increased requirements for cleanliness and hygiene (medical institutions, children's institutions and restaurants).

The specialized paint formula with an increased level of fungicidal protection provides reliable protection against moisture and mechanical wear.

Due to its high vapor permeability, the coating allows the walls to "breathe", reducing the risk of condensation accumulation and fungus formation.

The paint is resistant to washing, mechanical stress and the effects of cleaning agents, which makes it a durable option for rooms with increased operational requirements.

#### COLORS

WHITE

TONED  
IN PASTEL  
COLORS

#### PACKAGING



# INTERIOR PAINTS

## INTERIOR PAINT FOR CEILINGS AND WALLS "ROCKY CLIFFS"

LATEX MATTE



Named after **Tustan**, a fortress city on the rocks. This is a unique location, which is both an architectural monument and a natural monument of Ukraine. The date of foundation is the 12th century.



WITHIN PREMISES



TEMPERATURE APPLICATION



WASHING CLASS



FUNGICIDAL PROTECTION



MATTE



AESTHETIC AND MECHANICALLY STABLE



CLASS OF COVERING ABILITIES



DILUENT WATER



SAFE

## INTERIOR LATEX WATER-BASED PAINT "ROCKY CLIFFS" – is the optimal solution for interior finishing works, which combines aesthetic appearance and reliable protection

The product creates a matte finish, ideal for use in residential areas and offices.

The paint is also suitable for painting wallpaper on cellulose-paper and fiberglass bases.

Creates a reliable protective layer that masks base defects.

Prevents moisture accumulation, providing a comfortable microclimate and protection against mold formation.

The environmentally friendly composition, lack of a pungent odor, and ease of application make this product safe and convenient to use.

### COLORS

WHITE

TONED  
IN PASTEL  
COLORS

### PACKAGING



# INTERIOR PAINTS

## INTERIOR PAINT FOR CEILINGS AND WALLS GOLDEN FIELD

### ACRYLIC WASHING RACK



Named after **Ukrainian Wheat**, it is a symbol of a happy life, prosperity, and wealth. It has long been said: "If rye bread gives health and strength, then a wheat loaf adds happiness and beauty to them."



WITHIN PREMISES



TEMPERATURE APPLICATION



WASHING CLASS



FUNGICIDAL PROTECTION



MATTE



AESTHETIC AND MECHANICALLY STABLE



CLASS OF COVERING ABILITIES



DILUENT WATER



SAFE

## INTERIOR ACRYLIC PAINT FOR CEILINGS AND WALLS "ZOLOTE POLE" – provides a matte, vapor-permeable, durable coating that is ideal for for domestic and industrial premises

Suitable for decorative and protective treatment of traditional surfaces, as well as for painting wallpaper on cellulose-paper and fiberglass bases.

Creates a reliable protective layer that masks base defects.

A special formula with mineral pigments and special modifiers gives it excellent rheological properties for uniform application with standard painting tools or airless spraying.

spraying.

Environmentally safe composition.

### COLORS

WHITE

TONED  
IN PASTEL  
COLORS

### PACKAGING



# INTERIOR PAINTS

## INTERIOR PAINT FOR CEILINGS AND WALLS "LANY SHYROKOPOLI"

ACRYLIC TECHNOLOGICAL



*It is named after the **Broad Fields**, the beauty of which the Ukrainian poet Taras Shevchenko poetically described in his work "The Testament": "And the broad fields, and the Dnieper, and the steep ones..."*



WITHIN  
PREMISES



TEMPERATURE  
APPLICATION



WASHING CLASS



FUNGICIDAL  
PROTECTION



DEEP MATTE



AESTHETIC AND  
MECHANICALLY STABLE



CLASS OF COVERING  
ABILITIES



DILUENT  
WATER



SAFE

## INTERIOR ACRYLIC WATER-BASED PAINT "LANY SHYROKOPOLI"

– intended for decorative decoration of walls and ceilings in rooms

general purpose

Suitable for processing traditional building materials (such as concrete, brick), as well as for painting wallpaper on cellulose-paper and fiberglass bases.

Due to its properties, it provides high vapor permeability and protection from external influences, which makes it an excellent choice for interior work in residential and public spaces.

The environmentally friendly composition, lack of a pungent odor, and ease of application make this product safe and convenient to use.

### COLORS

WHITE

TONED  
IN PASTEL  
COLORS

### PACKAGING





# INTERIOR PAINTS

## INTERIOR PAINT FOR CEILINGS AND WALLS "CRYSTAL LAKES"

ACRYLIC ECOLOGICALLY SAFE



Named after **Lake Synevyr**, the largest and deepest high-mountain lake in Ukraine. In the middle is an island that resembles the pupil of an eye. Therefore, Synevyr is popularly called the "Eye of the Sea".



WITHIN PREMISES



TEMPERATURE APPLICATION



WASHING CLASS



FUNGICIDAL PROTECTION



MATTE



AESTHETIC AND MECHANICALLY STABLE



CLASS OF COVERING ABILITIES



DILUENT WATER



SAFE

## ACRYLIC WATER-BASED INTERIOR PAINT "CRYSTAL LAKES" – the optimal choice for economical repair and decorative finishing works in public and industrial premises

The paint provides a deep matte finish and is suitable for application to traditional building substrates, including concrete, brick and plaster, using standard painting tools or airless spraying.

The environmentally friendly composition, lack of a pungent odor, and ease of application make this product safe and convenient to use.

### COLORS

WHITE

### PACKAGING



# FAÇADE PAINTS

## FAÇADE PAINT










# "FAIRYTALE CASTLE"

SILICONE VAPOR-PERMEABLE



Named after the castle "Swallow's Nest" (Crimean: Qarılıyaç yuvası; (Greek: γυύύύ γυύύύγυύύ γύ) - a monument of architecture and history, located on the 40-meter cliff of Ai-Todorsky Cape in the town of Gaspra (AR Crimea).



-  OUTSIDE PREMISES
-  +5°C  
+35°C
-  15 YEARS OF PROTECTION
-  FUNGICIDAL PROTECTION
-  3 MATTE
-  AESTHETIC AND MECHANICALLY STABLE
-  1 CLASS OF COVERING ABILITIES
-  DILUENT WATER
-  ECO SAFE

## FAÇADES SILICONE WATER-BASED PAINT "FAIRYTALE CASTLE" – professional facade material for protection and decorative finishing external wall structures

The paint forms a white matte coating with high vapor permeability, which ensures effective moisture exchange and prevents condensation accumulation.

Silicone additives give the coating hydrophobic properties, protecting facades from moisture, dirt, and the development of microorganisms.

Thanks to its increased adhesion, the paint is evenly applied to mineral substrates such as concrete, brick and plaster, creating a weather-resistant protective layer.

The product is highly resistant to ultraviolet radiation, temperature fluctuations and mechanical wear, which provides long-term protection in adverse climatic conditions. The environmentally friendly composition allows the paint to be used on architectural heritage sites and in areas with high environmental requirements.

### COLORS



### PACKAGING



# FAÇADE PAINTS

## FAÇADE PAINT

# "WORLD HERITAGE"

ACRYLIC HIGH COVERAGE



Named after *St. Sophia of Kyiv*, a world-famous monument of architecture and monumental painting of the 11th century. In 1990, the cathedral, together with the ensemble of monastery buildings in its courtyard, was included in the UNESCO World Heritage List.



OUTSIDE  
PREMISES



TEMPERATURE  
APPLICATION



YEARS OF PROTECTION



FUNGICIDAL  
PROTECTION



MATTE



AESTHETIC AND  
MECHANICALLY STABLE



CLASS OF COVERING  
ABILITIES



DILUENT  
WATER



SAFE

## FAÇADE ACRYLIC WATER-BASED PAINT "WORLD HERITAGE" – is a specialized product for outdoor work that meets the highest quality standards and technological requirements

The paint forms a white matte coating with high vapor permeability, which ensures effective moisture removal and reduces the risk of fungus and mold formation on surfaces.

The material is resistant to UV radiation and maintains color stability over time. The increased adhesion provides strong and long-lasting adhesion to a variety of substrates such as concrete, plaster and brick, making the paint an optimal choice for restoration work, especially on cultural heritage sites.

The environmentally friendly composition without harmful impurities allows the paint to be used in environmentally sensitive areas without risk to human health.

### COLORS

WHITE

TONED  
IN PASTEL  
COLORS

WINDOW

TONED  
IN SATURATION  
COLORS

### PACKAGING



# FAÇADE PAINTS

## FAÇADE PAINT

# "ANCIENT FORTRESS"

ACRYLIC WEATHER RESISTANT



Named after **the Kamianets-Podilskyi fortress** (14th century) - important defensive structure in Eastern Europe. The fortress is part of the National Historical and Architectural Reserve "Kamenets", which belongs to the "7 Wonders of Ukraine".



OUTSIDE PREMISES



TEMPERATURE APPLICATION



YEARS OF PROTECTION



FUNGICIDAL PROTECTION



MATTE



AESTHETIC AND MECHANICALLY STABLE



CLASS OF COVERING ABILITIES



DILUENT WATER



SAFE

## FAÇADE ACRYLIC WATER-BASED PAINT "ANCIENT FORTRESS"

– high-quality protective material for outdoor work, which provides a reliable barrier against atmospheric influences, such as precipitation, wind and ultraviolet radiation

The paint is characterized by high vapor permeability, which provides the necessary moisture exchange and prevents the formation of condensate.

Resistance to abrasion, cracking, and mechanical damage makes this paint the optimal choice for long-term protection of facade structures.

The environmentally safe composition without harmful impurities allows the product to be used in both residential and industrial premises.

The paint is characterized by high adhesion to various substrates (concrete, plaster, brick), ensuring uniform coverage and excellent covering ability.

### COLORS

WHITE

TONED  
IN PASTEL  
COLORS

### PACKAGING



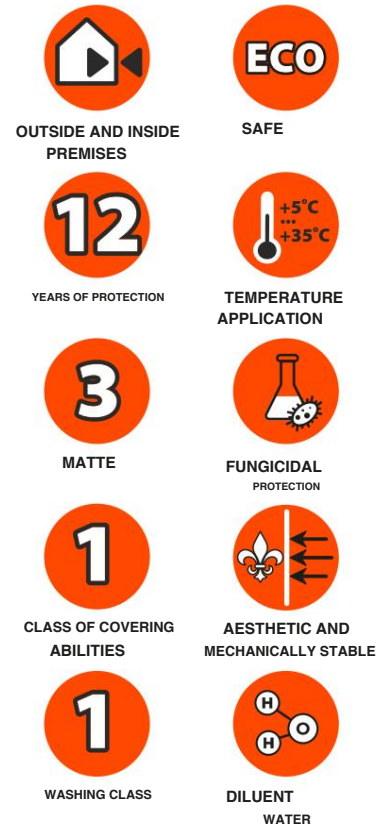
# UNIVERSAL PAINTS

## UNIVERSAL PAINT FOR FACADES AND INTERIORS "UNBREAKABLE CITADEL"

ACRYLIC HIGH COVERAGE



Named after the **Khotyn Fortress**, in 1621 a 75,000-strong Polish-Cossack army stopped a 200,000-strong Turkish invasion under its walls. The siege lasted almost a month, but they could not overcome its resistance. This victory is one of the most striking military events in the history of the Ukrainian Cossacks.



### UNIVERSAL PAINT FOR FACADES AND INTERIORS "UNBREAKABLE CITADEL" – is a high-quality roofing material for facade and interior applications, which provides long-lasting protection and coating durability

The paint forms a coating with high vapor permeability and wear resistance, which maintains the attractive appearance of surfaces for many years of operation.

Thanks to its environmentally friendly formula, the product is suitable for use in residential and industrial areas. The paint is intended for the treatment of walls, ceilings and facades exposed to atmospheric factors. Compatible with substrates made of concrete, brick, plaster and other mineral materials, the paint is easy to apply.

Resistance to washing allows you to maintain the cleanliness and freshness of the coating. The ability to tint provides a wide range of individual color solutions.

#### COLORS



#### PACKAGING



# UNIVERSAL PAINTS

## UNIVERSAL PAINT FOR FACADES AND INTERIORS "MARINE TOWER"

RUBBER MOISTURE RESISTANT



Named after the *Dzharylhatsky Lighthouse*, one of the most important lighthouses on the Black Sea, built in 1902. The visibility of the light is up to 14.8 miles. Its metal frame and technical equipment were made in Paris (according to legend, it was designed by Eiffel himself).

OUTSIDE AND INSIDE PREMISES	SAFE
YEARS OF PROTECTION	TEMPERATURE APPLICATION
MATTE	FUNGICIDAL PROTECTION
CLASS OF COVERING ABILITIES	AESTHETIC AND MECHANICALLY STABLE
WASHING CLASS	DILUENT WATER

### UNIVERSAL ACRYLIC RUBBER PAINT "MARINE TOWER"

– high-quality, premium-class paint intended for protective and decorative purposes painting surfaces

Intended for painting slate, tiles, ondulin, galvanized steel, aluminum, primed and unprimed ferrous metal, corrugated sheeting, asphalt, asbestos cement, concrete, foam concrete and aerated concrete, brick, plastered, putty surfaces, plywood, chipboard, fiberboard, wood, plasterboard surfaces, wallpapered surfaces, etc. Outside and inside buildings.

Thanks to the unique formula based on copolymer acrylate dispersion and synthetic rubbers, the coating is characterized by high elasticity, strength and resistance to moisture and mechanical stress. The paint creates a matte, uniform surface with excellent covering ability.

Effectively protects the base from atmospheric influences, prevents the formation of fungus due to fungicidal properties. The paint does not contain harmful substances and is safe to use. "Sea Tower" is a reliable choice for a durable and stylish finish.

COLORS	+	<b>ПРОЗОРИЙ</b> ТОНУЄТЬСЯ У НАСИЧЕНІ КОЛЬОРИ	PACKAGING
<b>RAL 5005</b> синій		<b>RAL 6005</b> морська зелень	
<b>RAL 7046</b> сірий		<b>RAL 7024</b> графіт	
<b>RAL 8017</b> коричнево-шоколадний		<b>RAL 9005</b> чорний	
		<b>RAL 9016</b> білий	

# ACRYLIC PRIMER-ENAMELS

## ACRYLIC PRIMER-ENAMEL FOR RADIATORS AND METAL SURFACES

### "7in1"

SILKY MATT



**ГРУНТ**  
захищає та вирівнює  
поверхню



**ЕМАЛЬ**  
декоративне фінішне  
покриття



**12 РОКІВ**  
атмосферо  
та УФ-стійка



**30 ХВИЛИН**  
швидко  
висихає



**ЕКО**  
екологічна,  
без запаху



**+80°C**  
термостійка



**УНІВЕРСАЛЬНА**  
зовні та всередині  
приміщень

## ACRYLIC PRIMER-ENAMEL FOR RADIATORS AND METAL SURFACES "7in1"

– is an elegant and reliable solution for protecting and decorating metal surfaces

Specially designed for heating radiators, it equally effectively protects metal structures of ventilation and air conditioning systems, ensuring resistance to corrosion and mechanical stress.

The silky-matte surface of high whiteness, resistant to moisture, washing and ultraviolet radiation, adds elegance to any interior.

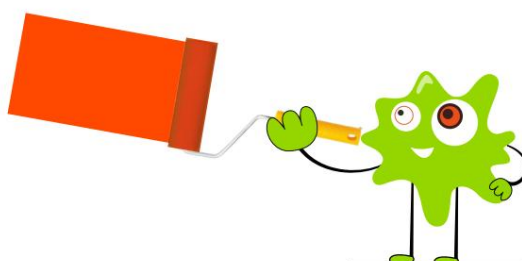
Thanks to its excellent rheological properties, the enamel is easily applied in various ways - by brush, roller or spray, forming a strong and elastic coating. The ability to tint in pastel shades expands design possibilities.

By choosing acrylic primer-enamel for radiators and metal surfaces "7in1", you choose quality, durability and impeccable appearance.

### COLORS

WHITE

TONED  
IN PASTEL  
COLORS



### PACKAGING

0.9kg

2.5kg

# ACRYLIC PRIMER-ENAMELS

## ACRYLIC PRIMER-ENAMEL FOR WOOD, METAL AND CONCRETE

### "7in1"



SILKY MATT



**ГРУНТ**  
захищає та вирівнює поверхню



**ЕМАЛЬ**  
декоративне фінішне покриття



**12 РОКІВ**  
атмосферно та УФ-стійка



**30 ХВИЛИН**  
швидко висихає



**ECO**  
екологічна, без запаху



**CLEAR COLOR**  
не жовтіє з часом



**УНІВЕРСАЛЬНА**  
зовні та всередині приміщень

## ACRYLIC PRIMER-ENAMEL FOR WOOD, METAL AND CONCRETE "7V1"

– a universal water-dispersion coating that combines the functions of a primer and a finishing layer, ensuring quick and effective renewal of surfaces made of wood, minerals, composites and metal (protected against corrosion)

High covering power and quick drying save your time. Elastic, silky-matte coating is resistant to mechanical damage, moisture, UV radiation, has anti-corrosion and fungicidal properties, ideal for rooms with increased hygiene requirements: kitchens, medical and educational institutions. Easy application, environmental safety and lack of a pungent odor make work comfortable.

Acrylic primer-enamel for wood, metal and concrete "7in1" is a combination of strength, beauty and durability. Thanks to the possibility of tinting in pastel colors, you can create a unique design that meets your preferences. The system of ready-made color solutions can satisfy any needs when performing repair work.

<b>COLORS</b>	+	<b>RAL 9016</b> білий тонується у пастельні кольори	<b>ПРОЗОРИЙ</b> тонується у насичені кольори	<b>PACKAGING</b>												
<table border="0"> <tr> <td><b>RAL 1023</b> жовтий</td> <td><b>RAL 3020</b> червоний</td> <td><b>RAL 3005</b> вишневий</td> <td><b>RAL 8017</b> коричнево-шоколадний</td> </tr> <tr> <td><b>RAL 5015</b> блакитний</td> <td><b>RAL 5005</b> синій</td> <td><b>RAL 6029</b> зелений</td> <td><b>RAL 6005</b> морська зелень</td> </tr> <tr> <td><b>RAL 7035</b> світло-сірий</td> <td><b>RAL 7046</b> сірий</td> <td><b>RAL 7024</b> графіт</td> <td><b>RAL 9005</b> чорний</td> </tr> </table>	<b>RAL 1023</b> жовтий	<b>RAL 3020</b> червоний	<b>RAL 3005</b> вишневий	<b>RAL 8017</b> коричнево-шоколадний	<b>RAL 5015</b> блакитний	<b>RAL 5005</b> синій	<b>RAL 6029</b> зелений	<b>RAL 6005</b> морська зелень	<b>RAL 7035</b> світло-сірий	<b>RAL 7046</b> сірий	<b>RAL 7024</b> графіт	<b>RAL 9005</b> чорний				
<b>RAL 1023</b> жовтий	<b>RAL 3020</b> червоний	<b>RAL 3005</b> вишневий	<b>RAL 8017</b> коричнево-шоколадний													
<b>RAL 5015</b> блакитний	<b>RAL 5005</b> синій	<b>RAL 6029</b> зелений	<b>RAL 6005</b> морська зелень													
<b>RAL 7035</b> світло-сірий	<b>RAL 7046</b> сірий	<b>RAL 7024</b> графіт	<b>RAL 9005</b> чорний													

## PRIMER CONCENTRATE 1:4 FOR FACADES AND INTERIORS

# "LEVADA SPACES"



Named after **the Landscapes of Ukraine** - endless expanses of cornfields, meadows covered with thick grass, forests and copses saturated with bright colors. Picturesque and fertile expanses of Ukraine.



OUTSIDE AND INSIDE PREMISES



SAFE



TEMPERATURE APPLICATION



FUNGICIDAL PROTECTION



DILUENT WATER

## SOIL CONCENTRATE 1:4 "SPROSTORI LEVADA"

– a universal acrylic product for preparing various surfaces for painting

Provides strong adhesion of the paint to the base, preventing the formation of cracks and peeling, salt stains, and improves the quality of painting work.

Ideal for treating porous surfaces indoors and outdoors. Thanks to its unique formula, it creates a strong polymer layer, improving adhesion and reducing paint consumption.

Easy to use: diluted with clean water in a ratio of 1:4. Applied with standard painting tools or by spraying. Has high fungicidal properties, preventing the formation of mold and mildew. Environmentally safe.

"Spacious Levadas" is a reliable and effective primer for creating a strong and durable coating. Easy to use, saves paint and your time. Guarantees high quality surface preparation for painting.

### COLORS



### PACKAGING



# UNIVERSAL PIGMENT PASTE

## UNIVERSAL PIGMENT PASTE "WILD FLOWERS"

HIGHLY PIGMENTED



Named after **the picturesque Ukraine** - wildflowers and meadow flowers create incredibly picturesque compositions. The variety of plants, colors, shapes, and aromas amazes and fascinates with their beauty.



OUTSIDE AND INSIDE  
THE PREMISES



SAFE



APPLICATION  
TEMPERATURE



FUNGICIDAL  
PROTECTION



WATER  
THINNER

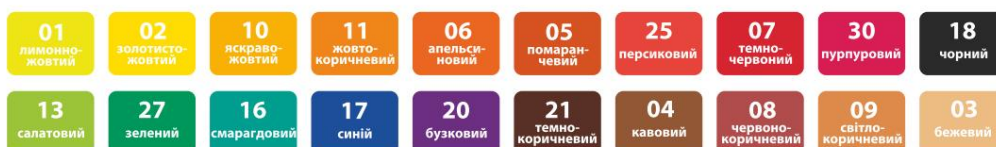
**UNIVERSAL TINTING PASTE "WILD FLOWERS"** – is a concentrate of inorganic and organic pigments and fillers with the addition of special additives

The presence of special additives allows the pigment composition to be ideally distributed both in aqueous systems and in products based on organic solvents.

"Field Flowers" tinting paste is intended for tinting water-dispersion interior, facade and universal paints, alkyd enamels, varnishes, impregnations and wood glazes, as well as lime compositions, grouts, plasters and primers in the selected color.

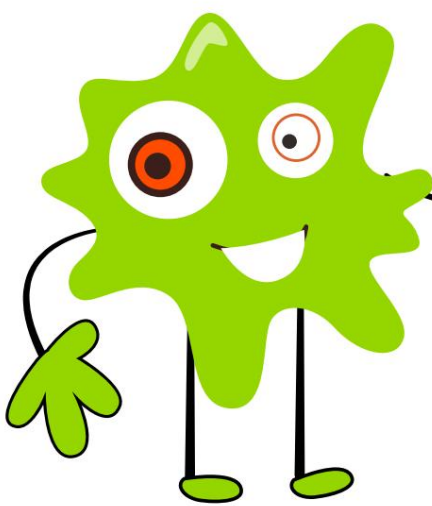
The pigment is produced in a balanced color range (20 ready-made solutions) and is transformed into more than 1000 shades in the system with LACRYSIL TM paints.

### COLORS



### PACKAGING



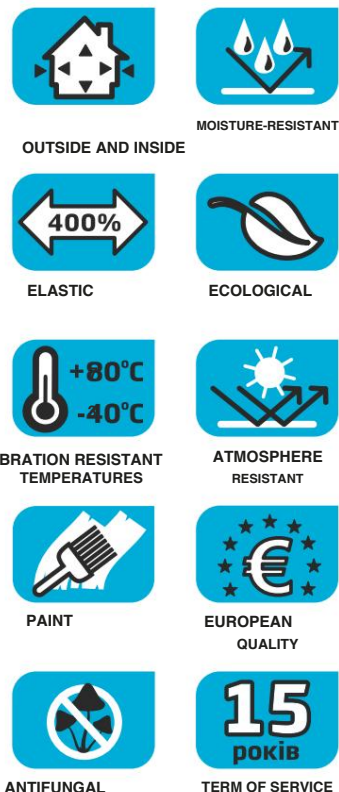


# SPECIAL PURPOSE MATERIALS



# ACRYLIC WATERPROOFING

## ACRYLIC WATERPROOFING «AQUA BLOCK»



### ACRYLIC WATERPROOFING "AQUA BLOCK" is a waterproof one-component product for external and internal use

The product is an effective means for sealing and waterproofing joints of surfaces operated in conditions of high humidity, frequent contact or prolonged immersion in water; for creating a waterproofing membrane when installing "warm floor" systems, tiled and rolled materials in sanitary and hygienic premises.

**APPLICATION:** working surfaces must be dry, strong and even, thoroughly cleaned of dust, dirt, mold, grease stains, remnants of old coatings, other contaminants and particles of material poorly bonded to the base. Metal surfaces must be protected from corrosion by phosphating or in another satisfactory manner. Surfaces of old tiled coatings, natural stone products or those that show signs of destruction or a porous structure must be thoroughly treated with a solution of Primer Concentrate 1:10 TM Lacrysil and dried. Immediately before carrying out work, mix the product until it is homogeneous and make sure that its temperature and the temperature of the environment are (+5...+35)°C. When installing underfloor heating systems, tiled or rolled materials, follow the manufacturer's recommendations. To create waterproofing coatings and membranes, the product is evenly applied to a previously thoroughly primed and dried surface with a traditional painting tool - a brush, roller or spray method, the following layers are applied crosswise in a similar way. Waterproofing is applied in layers no more than 1 mm thick until the total coating thickness is not less than 2 mm in sanitary and hygienic premises, not less than 3 mm for permanent immersion in water; each subsequent layer is applied after the previous one has dried. The formation time of the first layer is 2-3 hours; the following ones - 3-5 hours; the finishing one - not less than 72 hours and may increase under adverse conditions. When waterproofing surfaces that are operated in conditions of immersion in water (swimming pools, etc.), protect the layer with a film and avoid contact of the coating with moisture for 5-7 days.

### TECHNICAL SPECIFICATIONS

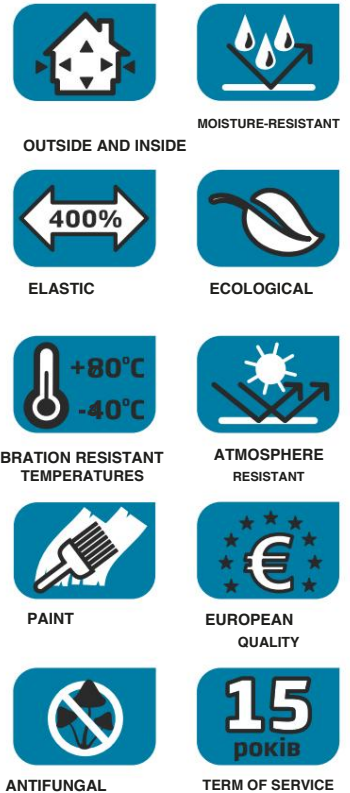
<b>Base</b>	acrylate copolymer
<b>Application temperature</b>	+5ўў ... +35ўў
<b>Drying time</b>	24 - 72 years old
<b>Color</b>	blue
<b>Operating temperature</b>	-40ўў ... +80ўў
<b>Cost</b>	0.7 - 1.3 kg/m <sup>2</sup>
<b>Packaging</b>	3kg; 7kg
<b>Shelf life</b>	18 months

### BASIS

Concrete, Brick, Gypsum, Drywall	✓
Stone, Granite, Marble	✓
Wood, chipboard, fiberboard, MDF, plywood, OSB	✓
Tile, Ceramics, Porcelain	✓
Primed metal, Galvanizing	✓
Plastic, PVC	✓
Polystyrene foam	✓

# ACRYLIC WATERPROOFING

## ACRYLIC WATERPROOFING «WATER BLOCK»



### ACRYLIC WATERPROOFING "WATER BLOCK" is a waterproof one-component product for external and internal use

The product is an effective means for sealing and waterproofing seams, joints and gaps between building structures; reliable waterproofing of surfaces operated in conditions of high humidity, frequent contact or prolonged immersion in water; for creating a waterproofing membrane when installing tiled and rolled materials in sanitary and hygienic premises, waterproofing layers under the "warm floor" system. The product has excellent adhesion to the surfaces of the vast majority of traditional building materials, enameled and glass products.

**APPLICATION:** working surfaces must be dry, strong and even, thoroughly cleaned of dust, dirt, mold, grease stains, remnants of old coatings, other contaminants and particles of material poorly bonded to the base. Metal surfaces must be protected from corrosion by phosphating or in another satisfactory manner. Surfaces of old tiled coatings, natural stone products or those that show signs of destruction or a porous structure must be thoroughly treated with a solution of Primer-concentrate 1:10 TM Lacrysil or an aqueous solution of the acrylic waterproofing itself 1:10 and dried. Immediately before carrying out work, mix the product until it is homogeneous and make sure that its temperature and the temperature of the environment are (+5...+35)°C. When installing underfloor heating systems, tiled or rolled materials, follow the manufacturer's recommendations. To seal and waterproof joints and cracks, fill the working cavity with a uniform continuous layer of the product and form a seam of the desired configuration. To create waterproofing coatings and membranes, the product is evenly applied to a previously thoroughly primed and dried surface with a traditional painting tool - a spatula, brush, roller, the second (if necessary, all subsequent) layers are applied crosswise in a similar manner. Waterproofing is applied in layers no more than 1 mm thick until the total coating thickness is not less than 2 mm; each subsequent layer is applied after the previous one has dried. The formation time of one layer is 24-48 hours; the finishing layer - not less than 72 hours and may increase under adverse conditions. When waterproofing surfaces (swimming pools, etc.), protect the layer with a film and avoid contact of the coating with moisture for 7-10 days.

### TECHNICAL SPECIFICATIONS

Base	acrylate copolymer
Application temperature	+5ўў ... +35ўў
Drying time	24 - 48 years old
Color	white
Operating temperature	-40ўў ... +80ўў
Cost	0.6 - 1.0 kg/m <sup>2</sup>
Packaging	1.2kg; 3kg; 6kg; 12kg
Shelf life	18 months

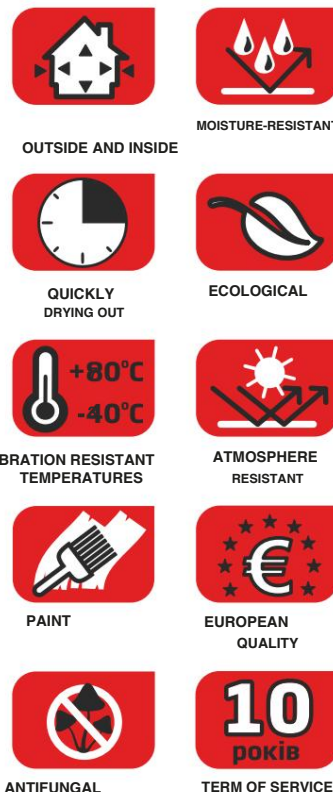
### BASIS

Concrete, Brick, Gypsum, Drywall	✓
Stone, Granite, Marble	✓
Wood, chipboard, fiberboard, MDF, plywood, OSB	✓
Tile, Ceramics, Porcelain	✓
Primed metal, Galvanizing	✓
Plastic, PVC	✓
Polystyrene foam	✓

# ACRYLIC PRIMER CONCENTRATE

## ACRYLIC PRIMER CONCENTRATE

«1:10»



## ACRYLIC PRIMER CONCENTRATE "1:10" – a universal means of preparing construction surfaces

Designed for strengthening and modifying the surfaces of many building materials during painting and plastering work, wallpapering, and finishing wooden and mineral substrates; priming basements of buildings and cellars to prevent the formation of salt stains on the surfaces and joints of building structural elements; if necessary, it can be used as a modifier in the process of preparing building mortars.

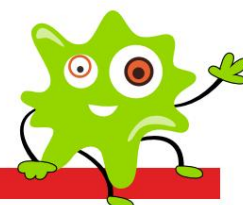
**APPLICATION:** the soil concentrate must be used in the form of a working solution: pour the desired amount of product into the container, add clean water at room temperature at the rate of 10 parts by volume per 1 part of the soil concentrate and mix thoroughly until smooth. Immediately before carrying out the work, make sure that the temperature of the working solution, contact surfaces and environment is within the range (+5...+35)°C and apply a sufficient amount to the working surfaces with a brush, roller or spray gun. The time for the formation of a soil film to degree 3 is 2-4 hours, depending on the nature of the material and the state of the environment. If necessary, apply the next layer of soil 1-4 hours after the previous one. The criterion for satisfactory priming is the absence of traces of building material on the hand when running over a dried working surface. Attention! Avoid the formation of a glossy polymer layer on porous surfaces. In case of suspension or upon completion of work, to preserve the consumer properties of the product, close the container with the soil concentrate or its working solution in a timely manner (swimming pools, etc.), protect the layer with a film and avoid contact of the coating with moisture for 5-7 days.

### TECHNICAL SPECIFICATIONS

Base	acrylate copolymer
Application temperature	+5ўў ... +35ўў
Drying time	1 - 4 years
Color	transparent
Operating temperature	-40ўў ... +80ўў
Cost	0.1 - 0.2 kg/m2
Packaging	1l; 2l; 5l
Shelf life	18 months

### BASIS

Concrete, Brick, Gypsum, Drywall	✓
Stone, Granite, Marble	✓
Wood, chipboard, fiberboard, MDF, plywood, OSB	✓
Tile, Ceramics, Porcelain	✓
Primed metal, Galvanizing	✓
Plastic, PVC	✓
Polystyrene foam	✓

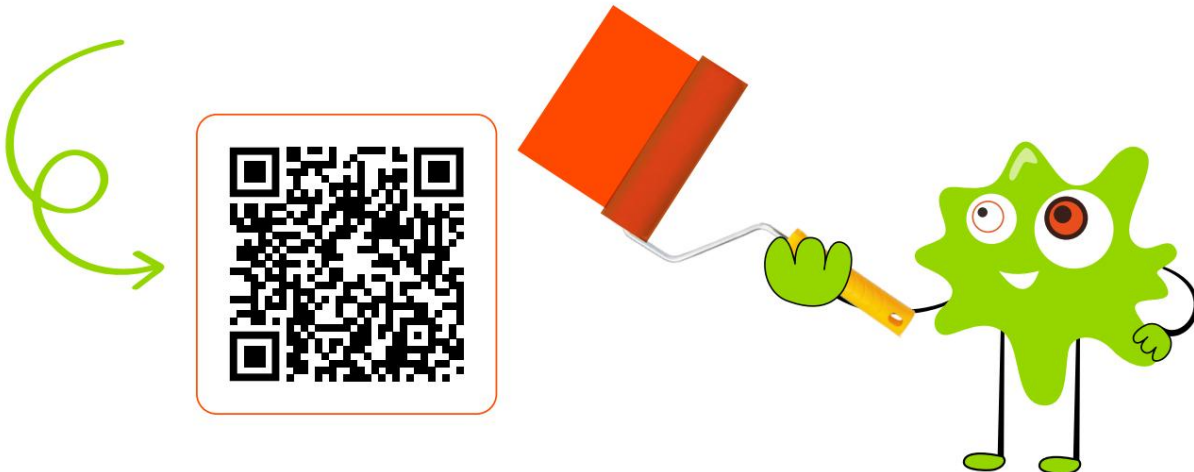


# VIDEO STORIES

Revival of the LACRYSIL brand after the complete destruction of the plant



Repair is easy if you choose LACRYSIL!



The history of the creation of the project "LACRYSIL PAINTS"





**CONTACTS:**

**POLYMER-LAC LLC** 75022,  
Ukraine, Kherson region. Kherson  
district, village Kyselyvka,  
Zaliznychna st., 12

**CANFOM LLC** 07300,  
Ukraine Kyiv  
region, Vyshgorod city,  
Novopromyslova st., 7



[WWW.LACRYSIL.UA](http://WWW.LACRYSIL.UA)

